

# BICHLER

## SIMMENTALS & RED ANGUS

*Join us*  
**Feb. 12, 2019**  
1 P.M. - AT THE RANCH - LINTON, N.D.

**70 Bulls**  
**50 Females**

● SIMMENTAL  
● SIMAngus™  
● RED Angus



# BICHLER

## SIMMENTALS & RED ANGUS



*Welcome* to our 14th annual production sale. First and foremost, we want to sincerely thank you for your interest in our program. This business, though challenging at times, has become a way of life for us and the rewards greatly outweigh the adversity. We have gained many lifelong friends and have met some talented cattlemen and women all over the world.

We would like to let you know what we have been doing on our ranch to ensure success on yours. We have DNA tested our entire cowherd to increase accuracy of EPDs and determine unknown polled and color statuses. We confirmed that the majority of our cowherd is homozygous polled, and 100 percent of our cows are non-diluted. This has helped us with sire selection and management.

We are offering a truly elite set of cattle this year. The bulls in the sale all had to meet strict parameters. They are backed by superior cows that have to excel in production with a good udder and sound structure. We are providing the opportunity to select females we generally do not offer for sale. We feel our herd size has reached its capacity, and it is time to increase not only the quality but the number of females we have in our sale.

As always, we are offering free feeding until after semen testing is complete in April. We offer free delivery within a 200-mile radius and will work with you in the event the bulls have further to go. If you cannot wait to get your new bull home, we will give you a \$50 discount per bull for any hauled to their new home on sale day. Because females will be due to calve shortly after the sale, we would appreciate if the heifers went home on sale day or if prior arrangements are made for a timely pick up.

Our sale is a video-only sale; no cattle will be brought through a ring. This method has been a great way to have the sale at the ranch without building a new facility. The advantage is no cattle will be moving during the sale, so you are free to view them as long as you like. They will be right out the door on sale day if you need a second look.

Thank you for your interest. We look forward to visiting with you about our offering. See you at the ranch Feb. 12!

- **Doug and Maria Bichler**, Bichler Simmentals and Red Angus



## Sale Day Phones:

**Doug Bichler** .....(701) 226-4068  
**Maria Bichler**.....(701) 340-9749  
**Paul Bichler** .....(701) 226-5861  
**Patrick Schumacher** .....(701) 321-3275

**Sale Location:** Bichler Ranch, see directions on page 47.

**Sale Terms:** All cattle sell under the Suggested Sale Terms & Conditions of the American Simmental Association. (Available upon request.)

**Phone Bids:** Phone bid services will be available if an interested party cannot attend the sale. Please leave your bid with any of the sale staff listed in the catalog and we will do our best to accommodate you. We will try and fulfill your request to the best of our ability and no "running" of the bid will be allowed.

**Accommodations:** Motel rooms are available at Don's Motel, (701) 254-5457, or the Cobblestone Inn & Suites, (701) 254-5734. Both motels are located just off of Hwy. 83 in Linton.

**Announcements:** Announcements made sale day and from the auction block take precedence over printed materials in the catalog or other printed material associated with the sale. Anyone attending the sale does so at their own risk. Any of the sale staff will not be responsible for any personal injury for attending this sale. We are not responsible for any accidents, damaged, or stolen items on sale day.

We reserve the right to collect up to 100 units of semen on any of the bulls, for in-herd use. The semen will be collected at the seller's expense and the buyer's convenience. Please contact us if you have any questions.

**Breeding Guarantee:** We guarantee all bulls to be breeders and we reserve the right to test any bulls in question as a non-breeder for at least 180 days before making an adjustment. And, if the bull is declared a sound breeder by a competent veterinarian, he will be returned to the buyer, at the buyer's expense. In case an adjustment is required, it will be made with a replacement of equal value to the animal in question, credit on purchase of another animal or return of purchase price. We guarantee cattle to be healthy on sale day.

**Health Program:** Bulls and heifers were calfhood vaccinated with Bovisheild Gold 5, Oneshot Ultra, 7-way Somnus, and injected with Dectomax. At weaning, calves were given Bovisheild Gold 5, 7-way Somnus and One Shot, boosters were given of the Bovisheild Gold 5, and 7-way Somnus and they were poured with Clean-Up II.

## Sale Personnel

**Tracy Harl**, Auctioneer.....(402) 469-3852  
Hastings, Neb.

**Scott Ressler**, Ringman .....(701) 391-7310  
North Dakota Stockmen's Association

**Kris Petersen**, Ringman.....(701) 339-0305  
Special Assignment

**Tony Heins**, Ringman.....(701) 400-4435  
Cattle Business Weekly

**Russ Danielson**.....(701) 261-2742  
American Simmental Association

**Feeding, Hauling & Insurance:** Bulls will be fed and semen tested free of charge until delivery. Bulls will be delivered after semen testing and we would prefer to have all bulls delivered by the end of April.

If you choose to take your bull home on sale day we will offer a \$50 discount off the purchase price and load out will be available after the sale.

Customers who opt to have their bull(s) fed at the ranch are encouraged to purchase insurance. Insurance will be available for purchase on sale day. We recommend insuring your bulls at least through the first breeding season and this is a measure we employ in our own programs as well. Full liability is assumed by the buyer when the gavel falls. Bichler Simmentals & Red Angus is not responsible for injury or accidental death.

We would like the heifers hauled home on sale day. Please make arrangements prior to the sale if you feel you cannot get your heifers home that day.

**EPD Information:** Please note that EPDs may change from the time the sale catalog is printed to the time the registration paper is transferred.

**Sale Format:** We will be conducting a video auction. The cattle will not go through the sale ring. Instead, we will have all the lots on video. Videos of the bulls and females will be played as each one sells. The cattle will be penned near the sale barn for evaluation on sale day.



**DVAuction**  
Broadcasting Real-Time Auctions  
Never Miss An Auction Again!  
Watch & Bid online for FREE!  
**Visit [www.DVAuction.com](http://www.DVAuction.com)  
and Register Today!**  
For General Questions Please Contact Our Office:  
(402) 316-5460 or [support@dvauction.com](mailto:support@dvauction.com)

The sale will be  
broadcast on  
DVAuction.







1

## BCLR AMBITION F305

ASA#: 3480610 Breed: PB SM DOB: 2/28/18  
Homozygous Polled Non-Diluted

**HOOK'S XPECTATION 36X**  
**CDI AMBITION 255C**  
**HSF RED FORTUNES SIS 33**  
**WS BEEF KING W107**  
**BCLR MISS BEEF KING A305**  
**TNT MISS ANGIE L59**

	IND	Ratio
Doc.	1	
Adj. SC	34.9	
Frame	5.6	
BW	78	113
205	654	85
YW	1182	89
ADG	3.3	
IMF	2.44	99
BF	0.25	96
REA	12.82	91

	CE	BW	WW	YW	ADG	MCE	Milk	MWW	Stay	Doc	YG	Marb	REA	API	TI
EPDs:	5.4	1.9	69.7	99.6	0.19	4.5	24.1	58.8	19.6	6.2	-0.54	0.01	1.04	121.2	68.7
Rank:	95	55	45	55	70	65	30	30	20	95	15	55	10	60	55

A light BW son of Ambition that I expect to calve easily. His dam is a dark red ET daughter of our L59 donor.

2

## BCLR AMBITION F335

ASA#: 3480615 Breed: PB SM DOB: 2/28/18  
Homozygous Polled Non-Diluted

**HOOK'S XPECTATION 36X**  
**CDI AMBITION 255C**  
**HSF RED FORTUNES SIS 33**  
**CDI AUTHORITY 77X**  
**BCLR MISS AUTHORITY A335**  
**BCLR MISS VICTORIA U824**

	IND	Ratio
Doc.	1	
Adj. SC	38.4	
Frame	6.6	
BW	105	81
205	800	104
YW	1308	99
ADG	3.2	
IMF	2.42	98
BF	0.28	108
REA	14.12	100

	CE	BW	WW	YW	ADG	MCE	Milk	MWW	Stay	Doc	YG	Marb	REA	API	TI
EPDs:	2	5.7	83.4	118.1	0.22	-0.1	23.7	65.4	20.9	15.4	-0.4	-0.03	0.78	114.7	69.8
Rank:	99	99	4	15	40	99	35	10	10	4	85	70	65	80	45

Performance is written all over this calf! F335 is one of the longest and stoutest bulls in the offering.

3

## BCLR AMBITION F435

ASA#: 3480629 Breed: PB SM DOB: 3/4/18  
Homozygous Polled Non-Diluted

**HOOK'S XPECTATION 36X**  
**CDI AMBITION 255C**  
**HSF RED FORTUNES SIS 33**  
**HSF HIGH ROLLER 12T**  
**BCLR MISS ROLLER B435**  
**HSR MS DETINATOR Z895**

	IND	Ratio
Doc.	1	
Adj. SC	39.1	
Frame	6.4	
BW	76	114
205	711	92
YW	1318	99
ADG	3.8	
IMF	3.58	146
BF	0.41	158
REA	13.29	94

	CE	BW	WW	YW	ADG	MCE	Milk	MWW	Stay	Doc	YG	Marb	REA	API	TI
EPDs:	7	1.4	69	101.5	0.2	4.9	32.5	66.9	19.4	15.3	-0.41	0.04	0.84	125.1	70.4
Rank:	90	45	45	50	60	60	1	4	20	4	80	45	50	50	45

Another light BW son of Ambition that also performed well. His dam has a beautiful udder and she raised our high indexing heifer last year.

4

## BCLR AMBITION F317

ASA#: 3480613 Breed: PB SM DOB: 3/16/18  
Homozygous Polled Non-Diluted

**HOOK'S XPECTATION 36X**  
**CDI AMBITION 255C**  
**HSF RED FORTUNES SIS 33**  
**HART EXTRA EFFORT G289**  
**BCLR MISS EFFORT A317**  
**TNT MISS TESSA G180**

	IND	Ratio
Doc.	1	
Adj. SC	38.7	
Frame	7.1	
BW	109	78
205	769	100
YW	1347	102
ADG	3.6	
IMF	2.27	92
BF	0.23	88
REA	12.68	90

	CE	BW	WW	YW	ADG	MCE	Milk	MWW	Stay	Doc	YG	Marb	REA	API	TI
EPDs:	-0.9	6.8	78.1	111	0.21	-3.6	20.9	59.9	22.7	13.3	-0.45	-0.04	0.77	110.2	64.3
Rank:	99	99	15	25	50	99	60	25	1	15	60	70	65	90	80

If you want to add frame to your calves, this bull can do it. His dam is a perfect uddered daughter out of our Tessa donor.





5

### BCLR AMBITION F309

ASA#: 3480611 Breed: PB SM DOB: 3/23/18  
 Homozygous Polled Non-Diluted

HOOK'S XPECTATION 36X  
 CDI AMBITION 255C  
 HSF RED FORTUNES SIS 33

CDI AUTHORITY 77X  
 BCLR MISS AUTHORITY 309  
 BCLR MISS LUMPY X02

	IND	Ratio
Doc.	1	
Adj. SC	38.1	
Frame	5.9	
BW	110	77
205	788	102
YW	1286	97
ADG	3.1	
IMF	1.65	67
BF	0.27	104
REA	13.79	98

	CE	BW	WW	YW	ADG	MCE	Milk	MWW	Stay	Doc	YG	Marb	REA	API	TI
EPDs:	0.4	6.1	87	126.9	0.25	-0.4	21.8	65.3	21.6	7.7	-0.41	0.04	0.94	119.3	73
Rank:	99	99	2	4	20	99	50	10	3	90	80	45	25	65	30

Dark red, long bodied, attractive and stout are all ways visitors have described this bull. The fact that he is backed by a solid Authority daughter only adds to his appeal!



LOT 5



Hooks Yankee 38Y • Dam of Lot 6

6

### BCLR AMBITION F38-1

ASA#: 3480622 Breed: PB SM DOB: 3/28/18  
 Homozygous Polled Non-Diluted

HOOK'S XPECTATION 36X  
 CDI AMBITION 255C  
 HSF RED FORTUNES SIS 33

WS BEEF KING W107  
 HOOK'S YANKEE 38Y  
 HOOK'S ULTIMATUM 36U

	IND	Ratio
Doc.	2	
Adj. SC	42.9	
Frame	6.3	
BW	104	ET
205	780	ET
YW	1308	ET
ADG	3.3	
IMF	2.46	82
BF	0.17	59
REA	14.28	101

	CE	BW	WW	YW	ADG	MCE	Milk	MWW	Stay	Doc	YG	Marb	REA	API	TI
EPDs:	1.5	3.9	76.3	109.8	0.21	-0.3	25.3	63.4	19.6	11.5	-0.43	0.2	0.88	125.4	73.9
Rank:	99	95	20	30	50	99	20	10	20	35	70	15	40	45	25

The only Yankee son in the offering this year. Check out his flush sisters in the lot 99 choice offering and you'll like him even more!



LOT 7

7

### BCLR AMBITION F410

ASA#: 3480625 Breed: PB SM DOB: 4/5/18  
 Homozygous Polled Non-Diluted

HOOK'S XPECTATION 36X  
 CDI AMBITION 255C  
 HSF RED FORTUNES SIS 33

WS ALL IN W111  
 BCLR MISS ALL IN B410  
 BCLR MISS AUTHORITY Z254

	IND	Ratio
Doc.	1	
Adj. SC	38.8	
Frame	6.5	
BW	110	76
205	824	107
YW	1251	94
ADG	3	
IMF	1.61	65
BF	0.21	81
REA	13.9	99

	CE	BW	WW	YW	ADG	MCE	Milk	MWW	Stay	Doc	YG	Marb	REA	API	TI
EPDs:	1.5	6.1	88	126.3	0.24	0	24.9	68.9	17.8	15.6	-0.37	0.02	0.7	111.9	73.4
Rank:	99	99	2	4	25	99	25	2	45	4	95	50	85	85	30

This calf is out of a maternal sister to lot 9. His dam is consistent with the cow family standards of fertility and milking ability.







8

### BCLR AMBITION F555

ASA#: 3480645 Breed: PB SM DOB: 4/7/18  
Homozygous Polled Non-Diluted

HOOK'S XPECTATION 36X  
CDI AMBITION 255C  
HSF RED FORTUNES SIS 33  
CDI VEGAS 26X  
BCLR MISS VEGAS C555  
BCLR MISS LINTON A308

	IND	Ratio
Doc.	1	
Adj. SC	39.9	
Frame	6.7	
BW	89	96
205	851	110
YW	1478	112
ADG	3.9	
IMF	2.64	107
BF	0.26	100
REA	13.94	99

	CE	BW	WW	YW	ADG	MCE	Milk	MWW	Stay	Doc	YG	Marb	REA	API	TI
EPDs:	7.3	3.3	75.9	108.2	0.2	3.8	32.5	70.4	21.8	8.9	-0.36	-0.07	0.63	122.8	69.3
Rank:	85	90	20	35	60	80	1	1	2	75	95	80	95	55	50

One of my favorite Ambition sons in the offering. If you study this calf, he literally has no holes. I love his moderate framed, easy keeping Vegas dam and if you combine this with his data he quickly surfaces to the top.

9

### BCLR AMBITION F254

ASA#: 3480608 Breed: PB SM DOB: 4/10/18  
Homozygous Polled Non-Diluted

HOOK'S XPECTATION 36X  
CDI AMBITION 255C  
HSF RED FORTUNES SIS 33  
CDI AUTHORITY 77X  
BCLR MISS AUTHORITY Z254  
BCLR MISS IVANNA W908

	IND	Ratio
Doc.	1	
Adj. SC	41.1	
Frame	6.5	
BW	99	90
205	782	101
YW	1409	106
ADG	3.9	
IMF	2.06	84
BF	0.23	88
REA	12.58	89

	CE	BW	WW	YW	ADG	MCE	Milk	MWW	Stay	Doc	YG	Marb	REA	API	TI
EPDs:	2.8	4.7	76.7	111.6	0.22	-0.1	24.3	62.6	19.5	15.5	-0.36	0	0.77	114	68
Rank:	99	99	20	25	40	99	30	15	20	4	95	60	65	80	60

Another descendant of the 1413 donor. Her daughters are great cows that stay in the herd. Couple that with the performance of Ambition and you have a solid herdbull option!

6



**BICHLER**  
SIMMENTALS & RED ANGUS



**10****BCLR RED EYE F445**

ASA#: 3480631 Breed: PB SM DOB: 3/4/18  
 Homozygous Polled Non-Diluted

DCR MR MOON SHINE X102  
 TNT RED EYE A212  
 TNT MISS Y32

NPS COW TOWN Y40  
 BCLR MISS COWTOWN B445  
 MLC MS 740T W573

	IND	Ratio
Doc.	1	
Adj. SC	41.1	
Frame	6.4	
BW	105	80
205	811	105
YW	1490	112
ADG	4.3	
IMF	1.82	74
BF	0.25	96
REA	16.49	117

	CE	BW	WW	YW	ADG	MCE	Milk	MWW	Stay	Doc	YG	Marb	REA	API	TI
EPDs:	5.4	5	77.3	117.1	0.25	4.7	19.1	57.7	16.6	16.8	-0.44	0.01	0.81	113.8	69.2
Rank:	95	99	15	15	20	65	80	40	65	2	65	55	55	80	50

Red Eye brought in a powerhouse here! I think this bull is so much better in person than his photo. He is long spined, heavy muscled and super quiet. Bulls like him are the reason we've used his sire heavily.

**LOT 10****11****BCLR RED EYE F818U**

ASA#: 3480668 Breed: PB SM DOB: 3/8/18  
 Homozygous Polled Non-Diluted

DCR MR MOON SHINE X102  
 TNT RED EYE A212  
 TNT MISS Y32

TNT GUNNER N208  
 BCLR MISS RANDI U818  
 DSR MY SUNSHINE S938

	IND	Ratio
Doc.	1	
Adj. SC	38.8	
Frame	6.2	
BW	103	85
205	761	99
YW	1322	100
ADG	3.5	
IMF	2.32	94
BF	0.26	100
REA	13.75	98

	CE	BW	WW	YW	ADG	MCE	Milk	MWW	Stay	Doc	YG	Marb	REA	API	TI
EPDs:	5	5	73.9	112.3	0.24	4.8	19.8	56.6	15.5	17.7	-0.41	-0.07	0.61	104.5	64.7
Rank:	99	99	25	25	25	60	70	45	80	1	80	80	95	95	80

U818 has been a solid cow in our program and has put high selling sons in the sale before. We love the balance and stoutness this bull possesses.

**LOT 11****12****BCLR RED EYE F117**

ASA#: 3480597 Breed: PB SM DOB: 4/9/18  
 Homozygous Polled Non-Diluted

DCR MR MOON SHINE X102  
 TNT RED EYE A212  
 TNT MISS Y32

SRF P RED COAT 819U  
 BCLR MISS RC Y117  
 BCLR MISS REGAN R513

	IND	Ratio
Doc.	1	
Adj. SC	37.5	
Frame	6.7	
BW	88	101
205	800	104
YW	1201	91
ADG	3	
IMF	1.74	71
BF	0.17	65
REA	15.57	111

	CE	BW	WW	YW	ADG	MCE	Milk	MWW	Stay	Doc	YG	Marb	REA	API	TI
EPDs:	8	3.5	71	107.9	0.23	6.6	20.1	55.5	14.7	15.5	-0.45	0.02	0.81	113.8	68
Rank:	80	90	40	35	35	30	70	55	90	4	60	50	55	80	60

F117 is a grandson of our Regan donor. I have liked this calf all year and his birth to weaning performance was exceptional. Full sister sells as a bred, lot 85.

**LOT 12**



**13****BCLR RED EYE F33**

ASA#: 3480614 Breed: PB SM DOB: 4/15/18  
 Homozygous Polled Non-Diluted

	IND	Ratio
Doc.	1	
Adj. SC	35.9	
Frame	6.3	
BW	104	84
205	824	107
YW	1294	98
ADG	2.9	
IMF	2.38	97
BF	0.28	108
REA	14.67	104

DCR MR MOON SHINE X102  
 TNT RED EYE A212  
 TNT MISS Y32  
 WS BEEF MAKER R13  
 SD/GS DREAM MAKER  
 GS LANAKS SCARLET

	CE	BW	WW	YW	ADG	MCE	Milk	MWW	Stay	Doc	YG	Marb	REA	API	TI
EPDs:	7.4	4.3	76.7	116.7	0.25	5.3	22.2	60.5	15.4	11.1	-0.45	0.09	0.95	118.9	72.2
Rank:	85	99	20	15	20	50	45	25	80	45	60	30	25	70	35

I expect F33 to be a high performance sire for his new owner. He is heavy muscled and offers more frame. He would work ideal on a set of Red Angus cows!

**14****BCLR AMBITION F101**

ASA#: 3480592 Breed: PB SM DOB: 4/21/18  
 Homozygous Polled Non-Diluted

	IND	Ratio
Doc.	2	
Adj. SC	39.2	
Frame	5.5	
BW	89	100
205	743	96
YW		N/A
ADG	2.9	
IMF	0.64	
BF	0.21	
REA	13.66	

HOOK'S XPECTATION 36X  
 CDI AMBITION 255C  
 HSF RED FORTUNES SIS 32  
 WS BEEF MAKER R13  
 BCLR MISS BF MKR Y101  
 BCLR MISS SHAGGY W903

	CE	BW	WW	YW	ADG	MCE	Milk	MWW	Stay	Doc	YG	Marb	REA	API	TI
EPDs:	12.6	2.6	73.3	113.4	0.25	7.6	23.4	60	12.7	15.8	-0.36	0.19	0.77	127.4	75.4
Rank:	20	75	30	20	20	15	35	25	99	3	95	15	65	40	20

F101 is one of the youngest bulls in the sale. He is a lighter BW Ambition who will moderate and add style.

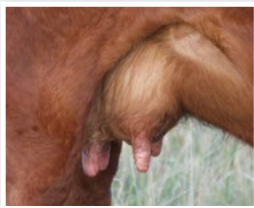
**LOT 16****BCLR Miss Driven D636 • Dam of Lot 16****15****BCLR RED EYE F811U**

ASA#: 3480667 Breed: PB SM DOB: 4/28/18  
 Homozygous Polled Non-Diluted

	IND	Ratio
Doc.	1	
Adj. SC	37.6	
Frame	6.5	
BW	82	108
205	785	102
YW		N/A
ADG	3.1	
IMF	1.93	
BF	0.31	
REA	12.87	

DCR MR MOON SHINE X102  
 TNT RED EYE A212  
 TNT MISS Y32  
 TNT GUNNER N208  
 BCLR MISS FANCY U811  
 BCLR MISS SHAWNA S616

	CE	BW	WW	YW	ADG	MCE	Milk	MWW	Stay	Doc	YG	Marb	REA	API	TI
EPDs:	15.6	0.9	56.7	80.4	0.15	9.2	26	54.3	16.8	18.6	-0.46	-0.24	0.68	111.7	57.5
Rank:	3	30	95	95	95	4	15	60	65	1	55	99	85	85	99

**Udder of Lot 15's Dam**

The youngest red bull in the offering. His dam goes back to our Tessa donor and her udder is exceptional at 10 years of age!

**16****BCLR RED EYE F636**

ASA#: 3489665 Breed: 3/4 SM 1/4 AR DOB: 2/10/18  
 Heterozygous Polled Non-Diluted

	IND	Ratio
Doc.	1	
Adj. SC	38.7	
Frame	6.3	
BW	72	
205	790	
YW	1371	
ADG	3.7	
IMF	3.55	100
BF	0.24	100
REA	12.03	100

DCR MR MOON SHINE X102  
 TNT RED EYE A212  
 TNT MISS Y32  
 BIEBER DRIVEN B105  
 BCLR MISS DRIVEN D636  
 BCLR MISS ALL IN B410

	CE	BW	WW	YW	ADG	MCE	Milk	MWW	Stay	Doc	YG	Marb	REA	API	TI
EPDs:	10.3	1.8	79.7	121.5	0.26	6	12.4	52.2	13.5	17.6	-0.25	0.02	0.63	108.8	69.2
Rank:	70	80	10	10	20	60	99	65	70	2	50	95	50	85	55

This bull's dam created quite a stir when she decided to calve before the sale and we had to pull her out! He started out light and performed extremely well. Keep him in mind when the breds sell, they are carrying calves like this!





**17****BCLR RED EYE D677**

ASA#: 3480662 Breed: 3/4 SM 1/4 AR DOB: 2/23/18  
 Homozygous Polled Non-Diluted

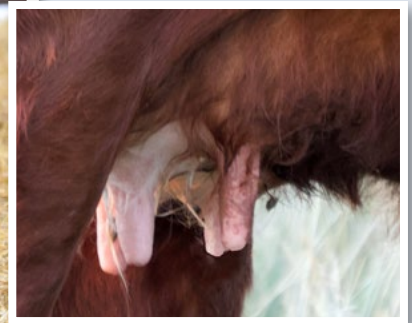
DCR MR MOON SHINE X102  
 TNT RED EYE A212  
 TNT MISS Y32

BIEBER DRIVEN B105  
 BCLR MISS DRIVEN D677  
 BCLR MISS VEGAS B411

	IND	Ratio
Doc.	1	
Adj. SC	37.3	
Frame	6	
BW	90	93
205	788	102
YW	1309	99
ADG	3.3	
IMF	3.57	145
BF	0.29	112
REA	13.84	98

	CE	BW	WW	YW	ADG	MCE	Milk	MWW	Stay	Doc	YG	Marb	REA	API	TI
EPDs:	14.2	1.4	71.1	111.4	0.25	8.6	22.8	58.3	14.2	16.2	-0.32	0.09	0.71	117.2	68.4
Rank:	25	75	30	25	25	20	45	30	65	4	30	90	35	65	55

F677 is a 3/4 brother to lot 16. These driven daughters have really hit it out of the park. They calve easy, have great udders with plenty of milk and are super to work with. F677 will add frame and performance to any calf crop.

**LOT 17****LOT 19**

Udder of Lot 19's Dam

**18****BCLR AMBITION F8**

ASA#: 3480665 Breed: 3/4 SM 1/4 AR DOB: 4/21/18  
 Homozygous Polled Non-Diluted

HOOK'S XPECTATION 36X  
 CDI AMBITION 255C  
 HSF RED FORTUNES SIS 32

HXC CONQUEST 4405P  
 HSF MS CON 112U 8Y  
 HSF HOTBODY 112U

	IND	Ratio
Doc.	2	
Adj. SC	35.1	
Frame	6.7	
BW	91	99
205	710	92
YW		N/A
ADG	3.3	
IMF	2.32	
BF	0.24	
REA	13.16	

	CE	BW	WW	YW	ADG	MCE	Milk	MWW	Stay	Doc	YG	Marb	REA	API	TI
EPDs:	13.3	1.2	63.1	99.6	0.23	8.5	22.3	53.8	12.5	15.4	-0.18	0.15	0.3	112.3	64.6
Rank:	20	4	30	25	25	70	15	15	45	15	70	80	99	75	75

Another younger son of Ambition. F8's dam is an easy keeping conquest we acquired from Hofmanns in KS.

**19****BCLR AMBITION F315**

ASA#: 3480612 Breed: 3/4 SM 1/4 AR DOB: 2/17/18  
 Homozygous Polled Non-Diluted

HOOK'S XPECTATION 36X  
 CDI AMBITION 255C  
 HSF RED FORTUNES SIS 33

CDI AUTHORITY 77X  
 BCLR MISS AUTHORITY A315  
 BCLR MISS SUPRISE W930

	IND	Ratio
Doc.	1	
Adj. SC	41.1	
Frame	5.7	
BW	76	116
205	688	89
YW	1183	89
ADG	3.1	
IMF	1.21	49
BF	0.29	112
REA	14.65	104

	CE	BW	WW	YW	ADG	MCE	Milk	MWW	Stay	Doc	YG	Marb	REA	API	TI
EPDs:	3.1	3.4	73.9	110.1	0.23	-0.9	25.3	62.1	20.4	14.4	-0.22	0.17	0.68	115.6	67.1
Rank:	99	99	20	25	40	99	25	15	4	15	55	75	40	70	65

This bull's dam is such a looker! We sold a full brother to him last year to Tom Bernhard and they are carbon copies of each other. Dark red, attractive and correct and check out his dam's udder!





20

**BCLR AMBITION F503**

ASA#: 3480632 Breed: 3/4 SM 1/4 AR DOB: 3/6/18  
 Homozygous Polled Non-Diluted

	IND	Ratio
Doc.	1	
Adj. SC	38.4	
Frame	6.2	
BW	77	112
205	690	90
YW	1203	91
ADG	3.3	
IMF	2.44	99
BF	0.2	77
REA	13.42	95

**HOOK'S XPECTATION 36X**  
**CDI AMBITION 255C**  
**HSF RED FORTUNES SIS 33**  
**CDI AUTHORITY 77X**  
**BCLR MISS AUTHORITY C503**  
**MESSMER GINNIE 282P**

	CE	BW	WW	YW	ADG	MCE	Milk	MWW	Stay	Doc	YG	Marb	REA	API	TI
EPDs:	6.5	2	70.4	105.4	0.22	2.8	23.1	58.2	19.9	12.2	-0.31	0.25	0.63	125.4	69.8
Rank:	99	85	30	35	50	95	40	30	10	40	30	60	50	50	50

The cross of Ambition and Authority really worked well. F503 is a lighter BW option that has tons of maternal potential.



21

**BCLR AMBITION F920**

ASA#: 3480674 Breed: 3/4 SM 1/4 AR DOB: 3/13/18  
 Homozygous Polled Non-Diluted

	IND	Ratio
Doc.	1	
Adj. SC	40.2	
Frame	6.5	
BW	103	86
205	732	95
YW	1378	104
ADG	4.1	
IMF	1.98	80
BF	0.3	115
REA	14.73	105

**HOOK'S XPECTATION 36X**  
**CDI AMBITION 255C**  
**HSF RED FORTUNES SIS 33**  
**BROWN VACATION H7106**  
**BCLR MISS ROMA W920**  
**KS MISS BROWNING T970**

	CE	BW	WW	YW	ADG	MCE	Milk	MWW	Stay	Doc	YG	Marb	REA	API	TI
EPDs:	1.5	3.8	71.2	102.3	0.19	0.9	26	61.5	21	14	-0.46	-0.08	0.8	100	59.5
Rank:	99	99	25	45	70	99	20	15	3	20	4	99	20	95	90

We sold a full brother to this bull in last years sale and he is just as stout and long as his brother was. His dam is a good Brown Vacation 1/2 blood cow that has definitely earned her keep.



**CDI Ambition 255C • Sire of many lots in the 2019 sale!**

22

**BCLR AMBITION F517**

ASA#: 3480634 Breed: 3/4 SM 1/4 AR DOB: 3/31/18  
 Homozygous Polled Non-Diluted

	IND	Ratio
Doc.	1	
Adj. SC	34.1	
Frame	5.8	
BW	75	114
205	668	87
YW	1161	88
ADG	3.1	
IMF	2.35	96
BF	0.24	92
REA	11.72	83

**HOOK'S XPECTATION 36X**  
**CDI AMBITION 255C**  
**HSF RED FORTUNES SIS 33**  
**CDI AUTHORITY 77X**  
**BCLR MISS AUTHORITY C517**  
**MISS BHR LOGAN 106**

	CE	BW	WW	YW	ADG	MCE	Milk	MWW	Stay	Doc	YG	Marb	REA	API	TI
EPDs:	5.4	1.5	61.8	90.1	0.18	1.7	27.6	58.5	21.6	14.3	-0.27	0.15	0.72	118.2	62.3
Rank:	99	75	65	70	75	99	10	30	2	15	40	80	35	65	80

F517 is a light BW Ambition out of our 106 donor cow family. There is as much maternal potential in this bull as any in the sale!







23

**BCLR AMBITION F440**

	IND	Ratio
Doc.	1	
Adj. SC	34.2	
Frame	7.1	
BW	100	N/A
205	799	N/A
YW	1383	N/A
ADG	3.7	
IMF	2.18	100
BF	0.24	100
REA	14.76	100

ASA#: 3524431 Breed: 3/4 SM 1/4 AR DOB: 4/2/18  
Homozygous Polled Non-Diluted

**HOOK'S XPECTATION 36X**  
**CDI AMBITION 255C**  
**HSF RED FORTUNES SIS 33**  
**WS RED DOZER Z98**  
**BCLR MISS DOZER B440**  
**LELAND DESTINY 6215-**

	CE	BW	WW	YW	ADG	MCE	Milk	MWW	Stay	Doc	YG	Marb	REA	API	TI
EPDs:	0	5.8	86.6	127.6	0.26	-0.8	23.1	66.3	16.3	11.2	-0.28	0.28	0.67	109.9	73.7
Rank:	99	99	2	4	20	99	40	4	40	55	40	55	45	80	30

We've had our eye on this calf from day one! His style and muscle will catch your eye anywhere in the pen. He is sure to be one of the top Ambition sons to sell this year!

24

**BCLR AMBITION F108**

	IND	Ratio
Doc.	1	
Adj. SC	39.4	
Frame	7.2	
BW	93	97
205	824	107
YW	1430	108
ADG	3.8	
IMF	3.03	123
BF	0.21	81
REA	14.34	102

ASA#: 3480595 Breed: 3/4 SM 1/4 AR DOB: 4/7/18  
Homozygous Polled Non-Diluted

**HOOK'S XPECTATION 36X**  
**CDI AMBITION 255C**  
**HSF RED FORTUNES SIS 33**  
**WS BEEF MAKER R13**  
**BCLR MISS BF MKR Y108**  
**TBS MS GOLDEN ROD 1413**

	CE	BW	WW	YW	ADG	MCE	Milk	MWW	Stay	Doc	YG	Marb	REA	API	TI
EPDs:	4.6	3.5	80.5	116.4	0.22	2.5	24.5	64.7	20.6	13.1	-0.35	0.18	0.72	121.3	72.1
Rank:	99	99	5	15	50	95	30	10	4	25	20	75	35	60	40

F108's dam is a favorite cow of mine. She is so easy to work with and has the phenotype that makes feeding cows fun! It's no surprise she brought in another good one, she is a direct daughter of our 1413 donor. This bull should sire performance and females you'll have to keep!



Udder of Lot 24's Dam.





**25 BCLR AMBITION F549**

	IND	Ratio
Doc.	1	
Adj. SC	36.6	
Frame	5.3	
BW	69	121
205	710	92
YW	1213	92
ADG	3.2	
IMF	2.47	100
BF	0.31	119
REA	12.9	92

ASA#: 3480637 Breed: 3/4 SM 1/4 AR DOB: 4/11/18  
Homozygous Polled Non-Diluted

**HOOK'S XPECTATION 36X**  
**CDI AMBITION 255C**  
**HSF RED FORTUNES SIS 33**

**HXC CONQUEST 4405P**  
**BCLR MISS CONQUEST C549**  
**BCLR MISS AUTHORITY 309**

CE	BW	WW	YW	ADG	MCE	Milk	MWW	Stay	Doc	YG	Marb	REA	API	TI
EPDs: 11.7	1.7	79	116.2	0.23	6.8	19.1	58.6	22.2	13.8	-0.28	0.06	0.5	129.4	70.7
Rank: 55	80	10	15	40	45	75	30	1	20	40	90	75	40	45

This is the lightest BW son of Ambition in the sale and judging from his actual data and the way he is made, I feel he could be used on heifers.



**26 BCLR RED EYE F407**

	IND	Ratio
Doc.	1	
Adj. SC	35	
Frame	6.2	
BW	79	112
205	773	100
YW		
ADG	2.6	
IMF	2.88	
BF	0.21	
REA	12.51	

ASA#: 3480623 Breed: 5/8 SM 3/8 AR DOB: 4/24/18  
Homozygous Polled Non-Diluted

**DCR MR MOON SHINE X102**  
**TNT RED EYE A212**  
**TNT MISS Y32**

**HXC CONQUEST 4405P**  
**BCLR MISS CONQUEST B407**  
**BCLR MISS ALL IN Z204**

CE	BW	WW	YW	ADG	MCE	Milk	MWW	Stay	Doc	YG	Marb	REA	API	TI
EPDs: 12.2	0.2	68.6	105.7	0.23	8.5	23.7	57.9	14.2	11.7	-0.25	0.06	0.43	113.4	67
Rank: 45	45	35	35	40	20	35	30	65	45	50	90	90	75	65

Another young bull, but just look at his performance from birth to weaning! We expect his calves to come easy and perform well.

**27 BCLR DRIVEN F622**

	IND	Ratio
Doc.	1	
Adj. SC	42.2	
Frame	7.3	
BW	88	96
205	845	110
YW	1535	116
ADG	4.4	
IMF	3.55	144
BF	0.39	150
REA	13.39	95

ASA#: 3480652 Breed: 1/2 SM 1/2 AR DOB: 2/26/18  
Heterozygous Polled Non-Diluted

**BIEBER HARD DRIVE Y120**  
**BIEBER DRIVEN B105**  
**BIEBER DURHEIM 293Z**

**BCLR SHAMWOW W611**  
**BCLR MISS SHAMWOW D622**  
**CDI MS CROCKET 88T**

CE	BW	WW	YW	ADG	MCE	Milk	MWW	Stay	Doc	YG	Marb	REA	API	TI
EPDs: 15.1	-0.3	83.2	129.1	0.29	7.2	31.1	72.6	19.2	19.4	-0.2	0.32	0.72	148	83.8
Rank: 15	35	3	3	10	35	2	1	10	1	65	45	35	10	3

Here is the boss of the 1/2 blood division. When you find out his granddam is 88T, it shouldn't be a surprise! Dimension at every angle, maternal ability and just look at the set of data he recorded!



**28 BCLR DRIVEN F668**

	IND	Ratio
Doc.	1	
Adj. SC	37.8	
Frame	5.8	
BW	65	122
205	810	105
YW	1370	103
ADG	3.6	
IMF	3.29	134
BF	0.29	112
REA	13.32	95

ASA#: 3480660 Breed: 1/2 SM 1/2 AR DOB: 2/28/18  
Heterozygous Polled Non-Diluted

**BIEBER HARD DRIVE Y120**  
**BIEBER DRIVEN B105**  
**BIEBER DURHEIM 293Z**

**LFE BLACK LAKOTA 385W**  
**BCLR MISS LAKOTA D668**  
**CDI MS CROCKET 88T**

CE	BW	WW	YW	ADG	MCE	Milk	MWW	Stay	Doc	YG	Marb	REA	API	TI
EPDs: 14.7	-3.2	70.3	111.5	0.25	5.7	26	61.1	15.9	14.5	-0.19	0.24	0.56	137.8	77.2
Rank: 20	4	30	25	25	70	15	15	45	15	65	65	60	20	10

Another 88T descendant who posted a data set that few can achieve. He is super dark red and has style to burn. I would recommend him for heifers.

**DVAuction**  
Broadcasting Real-Time Auctions

Never Miss An Auction Again!  
Watch & Bid online for FREE!

Visit [www.DVAuction.com](http://www.DVAuction.com)  
and Register Today!

For General Questions Please Contact Our Office:  
(402) 316-5460 or support@dvauction.com

The sale will be broadcast on DVAuction.



29

**BCLR DRIVEN F637**

ASA#: 3480654 Breed: 1/2 SM 1/2 AR DOB: 3/8/18  
Heterozygous Polled Non-Diluted

**BIEBER HARD DRIVE Y120**  
**BIEBER DRIVEN B105**  
**BIEBER DURHEIM 293Z**  
**TNT RED EYE A212**  
**BCLR MISS RED EYE D637**  
**BCLR MISS AUTHORITY Z211**

	IND	Ratio
Doc.	1	
Adj. SC	37.6	
Frame	5.7	
BW	71	115
205	722	94
YW	1292	98
ADG	3.6	
IMF	2.5	102
BF	0.26	100
REA	13.45	95

	CE	BW	WW	YW	ADG	MCE	Milk	MWW	Stay	Doc	YG	Marb	REA	API	TI
EPDs:	16.4	-1.8	61.1	95.7	0.22	9	27	57.4	17	16.2	-0.17	0.23	0.56	134.1	69.6
Rank:	10	15	65	60	50	15	15	35	35	4	75	65	65	30	50

I really like this bull's dam. She was injured the first part of the summer and I feel it affected her calf, but he has made up ground quickly. I would recommend him for heifers.



**LOT 29**



**LOT 31**



**Udder of Lot 29's Dam.**

30

**BCLR DRIVEN F624**

ASA#: 3480653 Breed: 1/2 SM 1/2 AR DOB: 3/9/18  
Heterozygous Polled Non-Diluted

**BIEBER HARD DRIVE Y120**  
**BIEBER DRIVEN B105**  
**BIEBER DURHEIM 293Z**  
**WS PRIME TIME B6**  
**BCLR MISS PRM TIME D624**  
**CDI MS TRUMP 130Y**

	IND	Ratio
Doc.	1	
Adj. SC	37.7	
Frame	7.2	
BW	65	122
205	748	97
YW	1458	110
ADG	4.5	
IMF	2.12	86
BF	0.26	100
REA	13.37	95

	CE	BW	WW	YW	ADG	MCE	Milk	MWW	Stay	Doc	YG	Marb	REA	API	TI
EPDs:	21.5	-2.4	71.6	113.7	0.26	11.4	25	60.7	21.5	12.9	-0.11	0.1	0.64	147.9	73.6
Rank:	1	10	25	20	20	2	25	20	2	30	90	85	50	10	30

Another calving ease option out of Driven and going back to Authority's full sister. I would recommend him for heifers.

31

**BCLR DRIVEN F673**

ASA#: 3480661 Breed: 1/2 SM 1/2 AR DOB: 4/1/18  
Homozygous Polled Non-Diluted

**BIEBER HARD DRIVE Y120**  
**BIEBER DRIVEN B105**  
**BIEBER DURHEIM 293Z**  
**CDI VEGAS 26X**  
**BCLR MISS VEGAS D673**  
**BCLR MISS RC Y117**

	IND	Ratio
Doc.	1	
Adj. SC	36.7	
Frame	6.1	
BW	93	90
205	806	105
YW	1326	100
ADG	3.3	
IMF	2.87	117
BF	0.3	115
REA	15.54	110

	CE	BW	WW	YW	ADG	MCE	Milk	MWW	Stay	Doc	YG	Marb	REA	API	TI
EPDs:	14.1	0.6	70.1	107.7	0.23	8.5	27	62	16.8	13.8	-0.26	0.24	0.64	131	72.6
Rank:	25	55	30	30	40	20	15	15	35	20	45	60	50	35	35

A high performing, stouter made Driven son whose dam is a maternal sister to lot 12. Great performance and maternals.







32

**BCLR CINCH F196**

ARAA#: 3992496 Breed: PB 1A AR DOB: 2/20/18  
Category 1A Non-Diluted

LSF SAGA 1040Y  
PIE CINCH 4126  
TKP BONNE BEL 110  
RED SSS DRIFTER 327W  
MISS BHR DRIFTER 196  
MISS BHR ROCKY RIDGE 770

	IND	Ratio
Doc.	1	
Adj. SC	40.6	
Frame	7	
BW	80	100
205	692	93
YW	1292	96
ADG	3.7	
IMF	2.82	108
BF	0.35	80
REA	11.1	91

	CE	BW	WW	YW	ADG	CEM	Milk	MWW	Stay	Doc	YG	Marb	REA	HB	GM
EPDs:	11	-0.4	64	100	0.22	23	8	*	15	*	0.26	0.33	-0.2	161	47
Rank:	76	71	19	26	37	57	35	*	71	*	99	59	87	77	71

F196 has a high performance pedigree in a dark red package. His dam consistently puts good calves in the sale every year. Category 1A



33

**BCLR CINCH F236**

ARAA#: 3992520 Breed: PB 1A AR DOB: 2/23/18  
Category 1A Non-Diluted

LSF SAGA 1040Y  
PIE CINCH 4126  
TKP BONNE BEL 110  
MESSMER PACKER S008  
BCLR MISS PACKER Z236  
EIR R214

	IND	Ratio
Doc.	1	
Adj. SC	36.7	
Frame	6.5	
BW	87	ET
205	754	ET
YW	1274	ET
ADG	3.3	
IMF	3.04	ET
BF	0.35	ET
REA	12.84	ET

	CE	BW	WW	YW	ADG	CEM	Milk	MWW	Stay	Doc	YG	Marb	REA	HB	GM
EPDs:	11	-1.3	67	105	0.24	19	9	*	16	*	0.19	0.25	-0.06	180	49
Rank:	75	52	11	16	26	91	14	*	54	*	92	82	54	46	41

F236 is a versatile herdsire option out of our Z236 donor. His dam has as good of a foot and udder as you'll find. His maternal sister topped the ND Red Select Sale 2 years ago selling for \$10,250 to Rhodes Red Angus. Z236 was also the pick of Kenner Simmentals when we offered a flush on any cow and her progeny have risen to the top of their program as well! I would recommend F236 for heifers. Category 1A



34

**BCLR DRIVEN F6466**

ARAA#: 3992506 Breed: PB 1B AR DOB: 3/31/18  
Category 1B Non-Diluted

BIEBER HARD DRIVE Y120  
BIEBER DRIVEN B105  
BIEBER DURHEIM 293Z  
LSF EXPECT ECHO 2252Z  
LELAND ECHO 6466  
LELAND COOL 9047-Y47

	IND	Ratio
Doc.	1	
Adj. SC	40	
Frame	6.8	
BW	85	115
205	831	112
YW	1433	107
ADG	3.8	
IMF	2.39	92
BF	0.23	120
REA	13.32	109

	CE	BW	WW	YW	ADG	CEM	Milk	MWW	Stay	Doc	YG	Marb	REA	HB	GM
EPDs:	13	-1.1	70	116	0.28	28	8	*	16	*	0.1	0.56	0.19	189	52
Rank:	43	56	5	3	3	9	38	*	57	*	47	13	9	29	4

This calf just keeps getting stouter as he gets older. Another performance pedigree on the bottom side combined with the maternal ability of Driven, makes him a well rounded crossbreeding option. Category 1B

BCLR Driven B105 • Sire of several lots in the 2019 sale!







### 35 BCLR CASH FLOW F105

ASA#: 3480594 Breed: PB SM DOB: 2/21/18  
Homozygous Polled Homozygous Black

CCR WIDE RANGE 9005A  
BCLR CASH FLOW C820  
BCLR MISS MONICA U820

RC CLUB KING 040R  
BCLR MISS CLUB KING Y105  
BCLR MISS TARYN T714

	IND	Ratio
Doc.	1	
Adj. SC	35.5	
Frame	6.5	
BW	86	104
205	822	107
YW	1422	107
ADG	3.8	
IMF	2.19	89
BF	0.22	85
REA	15.41	109

	CE	BW	WW	YW	ADG	MCE	Milk	MWW	Stay	Doc	YG	Marb	REA	API	TI
EPDs:	13.3	1.2	83.2	124.2	0.26	5.8	19.1	60.6	22.1	13.4	-0.48	0.05	1.01	146.1	79.6
Rank:	15	40	4	10	15	40	80	20	2	15	45	45	15	10	10

F105 is the only Cash Flow in the sale this year. Cash Flow keeps impressing us with his consistency to produce the good ones. Study his data and EPDs and you'll see why F105 is one to have on your short list!



C563 • Dam of Lot 36

### 36 BCLR INNOVATOR F563

ASA#: 3480647 Breed: PB SM DOB: 2/21/18  
Homozygous Polled Homozygous Black

TJ MAIN EVENT 503B  
CDI INNOVATOR 325D  
CDI MS SHEAR FORCE 49U

CCR WIDE RANGE 9005A  
BCLR MISS WIDE RNGE C563  
WS MOTHER LODE W21

	IND	Ratio
Doc.	1	
Adj. SC	38	
Frame	5.5	
BW	60	TW
205	651	TW
YW	1148	TW
ADG	3.1	
IMF	2.61	100
BF	0.22	100
REA	12.41	100

	CE	BW	WW	YW	ADG	MCE	Milk	MWW	Stay	Doc	YG	Marb	REA	API	TI
EPDs:	12.9	0.2	82.8	127.9	0.28	6.8	23.5	64.8	18.4	15.9	-0.41	0.17	1.08	146.9	83.9
Rank:	15	20	5	4	10	25	35	10	35	3	80	20	10	5	2

This bull's dam is part of our lot 70 pick. She is really a nice cow and this mating to Innovator really worked. He is a "mini me" of his sire who is very stylish and correct. I would recommend him for heifers.



LOT 36







Z883 • Dam of Lot 37

**37 BCLR DUAL RANGE F887-1**

	IND	Ratio
Doc.	1	
Adj. SC	38	
Frame	7.4	
BW	100	ET
205	817	ET
YW	1445	ET
ADG	3.9	
IMF	2.47	82
BF	0.39	134
REA	13.06	92

ASA#: 3480670    Breed: PB SM    DOB: 3/2/18  
 Homozygous Polled    Heterozygous Black

CCR WIDE RANGE 9005A  
 BCLR DUAL RANGE D21-1  
 WS MOTHER LODE W21  
 BCLR SHAMWOW W611  
 KS ZADA Z887  
 KS PENNY X395

**38 BCLR WIDE LOAD F434**

	IND	Ratio
Doc.	1	
Adj. SC	42.1	
Frame	5.7	
BW	100	86
205	835	108
YW	1383	104
ADG	3.4	
IMF	2.37	96
BF	0.28	108
REA	16.29	116

ASA#: 3480628    Breed: PB SM    DOB: 3/4/18  
 Homozygous Polled    Heterozygous Black

CCR WIDE RANGE 9005A  
 BCLR WIDE LOAD C21-3  
 WS MOTHER LODE W21  
 NPS COW TOWN Y40  
 BCLR MISS COWTOWN B434  
 BCLR MISS RC Y155

	CE	BW	WW	YW	ADG	MCE	Milk	MWW	Stay	Doc	YG	Marb	REA	API	TI
EPDs:	10.9	2.1	82.5	125.6	0.27	6.3	25.8	67	17.6	16.8	-0.3	0.05	0.82	131.5	77.8
Rank:	40	60	5	5	10	35	20	4	50	2	99	45	55	30	10

	CE	BW	WW	YW	ADG	MCE	Milk	MWW	Stay	Doc	YG	Marb	REA	API	TI
EPDs:	6.2	4.6	86	128.5	0.27	3.8	13.2	56.1	14.7	10.3	-0.42	-0.02	0.88	112.8	73.3
Rank:	95	99	3	3	10	80	99	50	90	55	75	65	40	85	30

If you need frame added to your cowherd, this Dual Range son can do it! He is our only bull out of Zada this year. His flush sister is our best open in the keep pen!

Did someone say tank? This calf has been a truck since he was little. He has that extra body that will add payweight to any calf crop and his pretty dam is easily found in our herd.





**39****BCLR WIDE LOAD F559**

ASA#: 3480646 Breed: PB SM DOB: 3/5/18  
 Homozygous Polled Homozygous Black

CCR WIDE RANGE 9005A  
 BCLR WIDE LOAD C21-3  
 WS MOTHER LODE W21

TNT AXIS X307  
 BCLR MISS AXIS C559  
 BCLR MISS XPECT Z212

	IND	Ratio
Doc.	1	
Adj. SC	33.6	
Frame	5.9	
BW	68	121
205	813	105
YW	1340	101
ADG	3.3	
IMF	3.31	135
BF	0.31	119
REA	12.61	89

	CE	BW	WW	YW	ADG	MCE	Milk	MWW	Stay	Doc	YG	Marb	REA	API	TI
EPDs:	12.4	-0.3	79.5	117.9	0.24	7.2	23.4	63.1	17.9	14.6	-0.39	0.11	0.96	140.5	80.5
Rank:	20	15	10	15	25	20	35	15	45	10	90	30	20	15	5

Another big ribbed son of Wide Load. This calf looks a lot like his sire and we can't wait to calve out his paternal sisters! This bull should sire performance and maternal with great udders.

**LOT 39****40****BCLR WIDE LOAD F93**

ASA#: 3480676 Breed: PB SM DOB: 3/11/18  
 Homozygous Polled Homozygous Black

CCR WIDE RANGE 9005A  
 BCLR WIDE LOAD C21-3  
 WS MOTHER LODE W21

TNT JUMP START R238  
 JSF MISS 93T  
 TNT MISS R93

	IND	Ratio
Doc.	1	
Adj. SC	40	
Frame	6.5	
BW	88	101
205	796	103
YW	1396	105
ADG	3.8	
IMF	2.29	93
BF	0.13	50
REA	15.7	111

	CE	BW	WW	YW	ADG	MCE	Milk	MWW	Stay	Doc	YG	Marb	REA	API	TI
EPDs:	5.9	1.6	69.9	105.3	0.22	2.3	27.7	62.6	17.2	13.8	-0.5	0.09	1.19	123.3	72
Rank:	95	50	45	40	40	95	10	15	55	15	30	30	2	55	35

A larger framed Wide Load out of a consistent producing dam. He would be a great option for British cows.

**41****BCLR WIDE LOAD F527**

ASA#: 3480636 Breed: PB SM DOB: 3/12/18  
 Homozygous Polled Homozygous Black

CCR WIDE RANGE 9005A  
 BCLR WIDE LOAD C21-3  
 WS MOTHER LODE W21

HTP SVF IN DEW TIME  
 BCLR MISS IDT C527  
 BCLR MISS REGAN R513

	IND	Ratio
Doc.	1	
Adj. SC	37.5	
Frame	6.3	
BW	82	104
205	710	92
YW	1137	86
ADG	2.7	
IMF	2.05	83
BF	0.19	73
REA	12.32	87

	CE	BW	WW	YW	ADG	MCE	Milk	MWW	Stay	Doc	YG	Marb	REA	API	TI
EPDs:	10.8	1.4	69.6	101.4	0.2	5.5	19.3	54	19.2	14.5	-0.42	0.02	0.91	129	69.7
Rank:	40	45	45	50	60	50	75	65	25	10	75	50	30	35	50

An easy calving option if you'd like a Wide Load backed by our Regan cow family.

**42****BCLR WIDE LOAD F904C**

ASA#: 3480673 Breed: PB SM DOB: 3/12/18  
 Homozygous Polled Heterozygous Black

CCR WIDE RANGE 9005A  
 BCLR WIDE LOAD C21-3  
 WS MOTHER LODE W21

REMINGTON LOCK N LOAD54U  
 BRKC CAMBRIE C904  
 AJE/HS/MBCCHOPES WHISPER

	IND	Ratio
Doc.	1	
Adj. SC	39.5	
Frame	6	
BW	79	107
205	743	96
YW	1310	99
ADG	3.1	
IMF	2.27	92
BF	0.28	108
REA	14.92	106

	CE	BW	WW	YW	ADG	MCE	Milk	MWW	Stay	Doc	YG	Marb	REA	API	TI
EPDs:	12.6	0.2	69.8	108.4	0.24	6.6	22.9	57.7	18.5	14.3	-0.51	-0.04	1.17	130.4	71.2
Rank:	20	20	45	30	25	30	40	40	35	10	25	70	3	35	40

The lightest BW Wide Load son in the offering. We love this bull's attractive baldy dam!

**BCLR Wide Load C21-3 • Sire of several lots of the sale!**





**LOT 43**

**43**

**BCLR WIDE LOAD F552C**

ASA#: 3480642 Breed: PB SM DOB: 3/13/18  
Homozygous Polled HOMOZYGOUS BLACK

**CCR WIDE RANGE 9005A**  
**BCLR WIDE LOAD C21-3**  
**WS MOTHER LODE W21**  
**TNT RED EYE A212**  
**BCLR MISS RED EYE C552**  
**KS HANNAH Y337**

	IND	Ratio
Doc.	1	
Adj. SC	36.6	
Frame	6.3	
BW	100	85
205	910	118
YW	1347	102
ADG	2.8	
IMF	2.97	121
BF	0.29	112
REA	13.23	94

	CE	BW	WW	YW	ADG	MCE	Milk	MWW	Stay	Doc	YG	Marb	REA	API	TI
EPDs:	7.2	4.2	91.6	139.8	0.3	4.4	21.2	66.9	17	15.8	-0.4	0.07	1	127	80.6
Rank:	85	95	1	1	2	70	55	4	60	3	85	35	15	45	5

This bull is a higher performing version of his full brother who sold to Wildberry Farms last year. His dam is a good Red Eye daughter that stems from our no miss Y337 donor.



**LOT 44**



**KS Miss Tanker Y552 • Dam of Lots 44 and 54-57**

**44 BCLR WIDE LOAD F552Y**

ASA#: 3480643 Breed: PB SM DOB: 3/15/18  
Homozygous Polled HOMOZYGOUS BLACK DDF

**CCR WIDE RANGE 9005A**  
**BCLR WIDE LOAD C21-3**  
**WS MOTHER LODE W21**  
**TNT TANKER U263**  
**KS MISS TANKER Y552**  
**SHOESTRING PRED S28**

	IND	Ratio
Doc.	1	
Adj. SC	40.7	
Frame	6.6	
BW	84	107
205	812	105
YW	1370	103
ADG	3.5	
IMF	3.09	126
BF	0.28	108
REA	13.77	98

	CE	BW	WW	YW	ADG	MCE	Milk	MWW	Stay	Doc	YG	Marb	REA	API	TI
EPDs:	11.1	1.2	79	122.5	0.27	9	24.7	64.1	18.1	16	-0.36	0.13	1.03	137.9	78.9
Rank:	35	40	10	10	10	5	25	10	40	3	95	25	15	15	10

The Y552 cow has 5 sons in this years sale and we hope you see why she was flushed! Here is a moderate BW son that went on to perform very well. Her Frontier son was a favorite in last years sale.

**45 BCLR WIDE LOAD F104**

ASA#: 3480593 Breed: PB SM DOB: 3/20/18  
Homozygous Polled HOMOZYGOUS BLACK

**CCR WIDE RANGE 9005A**  
**BCLR WIDE LOAD C21-3**  
**WS MOTHER LODE W21**  
**PVF-BF BF26 BLACK JOKER**  
**BCLR MISS JOKER Y104**  
**BCLR MISS RAYCH U819**

	IND	Ratio
Doc.	1	
Adj. SC	38.5	
Frame	6.4	
BW	89	101
205	790	102
YW	1310	99
ADG	3.3	
IMF	2.21	90
BF	0.29	112
REA	13.95	99

	CE	BW	WW	YW	ADG	MCE	Milk	MWW	Stay	Doc	YG	Marb	REA	API	TI
EPDs:	9	2.2	73.2	109.8	0.23	3.9	22.4	58.9	19.9	11	-0.46	-0.11	1.03	121.4	67.9
Rank:	65	65	30	30	35	75	45	30	15	45	55	90	15	60	60

Longevity is bred into F104. He hails from one of the first cow families developed here. Low BW with solid performance.





**46****BCLR WIDE LOAD F707**

ASA#: 3480664 Breed: PB SM DOB: 3/21/18  
 Homozygous Polled Homozygous Black

CCR WIDE RANGE 9005A  
 BCLR WIDE LOAD C21-3  
 WS MOTHER LODE W21

TNT TONNER N374  
 BCLR MISS TRACY T707  
 BCLR MS PANDA P8

	IND	Ratio
Doc.	1	
Adj. SC	38.5	
Frame	6.2	
BW	93	96
205	830	108
YW	1470	111
ADG	4	
IMF	2.23	91
BF	0.28	108
REA	14.36	102

	CE	BW	WW	YW	ADG	MCE	Milk	MWW	Stay	Doc	YG	Marb	REA	API	TI
EPDs:	7.2	2.6	74.9	112.6	0.24	3.2	24.2	61.6	13.5	9.2	-0.45	-0.26	1.08	97.8	64.5
Rank:	85	75	25	25	25	85	30	20	95	75	60	99	10	99	80

The lone baldy bull, but if you've followed our program, you know his dam has put a high selling bull in our sale multiple years. She has sons working for Jeff Abbot, Lewis Opp, and Kaelberer Simmentals to name a few. The only thing we can say bad about her is she rarely has a heifer!

**47****BCLR WIDE LOAD F409**

ASA#: 3480624 Breed: PB SM DOB: 4/14/18  
 Homozygous Polled Homozygous Black

CCR WIDE RANGE 9005A  
 BCLR WIDE LOAD C21-3  
 WS MOTHER LODE W21

BCLR SHAMWOW W611  
 BCLR MISS SHAMWOW B409  
 BCLR MISS HONEY Z245

	IND	Ratio
Doc.	1	
Adj. SC	41.3	
Frame	6.3	
BW	105	81
205	904	117
YW	1601	121
ADG	4.4	
IMF	2.9	118
BF	0.28	108
REA	14.45	103

	CE	BW	WW	YW	ADG	MCE	Milk	MWW	Stay	Doc	YG	Marb	REA	API	TI
EPDs:	4.9	4.9	96.5	145	0.3	2	17.7	65.9	18.8	16.7	-0.45	0.09	1.01	129.5	82.6
Rank:	99	99	1	1	2	95	90	5	30	2	60	30	15	35	3

This bull is a performance powerhouse. Look at his adj WW and YW! He just keeps going and has quickly caught up with his older brothers. Do you need to add weight to your calves? Who doesn't? He should be on your short list.

**49****BCLR RED EYE F809U**

ASA#: 3480666 Breed: PB SM DOB: 3/23/18  
 Homozygous Polled Heterozygous Black

DCR MR MOON SHINE X102  
 TNT RED EYE A212  
 TNT MISS Y32

HOOKS PACESETTER 8P  
 BCLR MISS PACER U809  
 BCLR MISS SHARI S610

	IND	Ratio
Doc.	1	
Adj. SC	36.6	
Frame	6.4	
BW	94	95
205	786	102
YW	1367	103
ADG	3.6	
IMF	2.03	83
BF	0.22	85
REA	15.89	113

	CE	BW	WW	YW	ADG	MCE	Milk	MWW	Stay	Doc	YG	Marb	REA	API	TI
EPDs:	12.5	2.9	64.5	99.7	0.22	8.1	22.7	54.9	17.2	16.8	-0.62	-0.18	1.13	113.7	61.8
Rank:	20	80	70	55	40	10	40	55	55	2	1	99	4	80	90

A larger framed Red Eye son with a big quarter and his dam is coming with her 10th calf!

**50****BCLR RED EYE F158**

ASA#: 3480599 Breed: PB SM DOB: 4/4/18  
 Homozygous Polled Heterozygous Black

DCR MR MOON SHINE X102  
 TNT RED EYE A212  
 TNT MISS Y32

BRANT GENERAL U6K  
 BRANT Y728T  
 GFI MISS FB T7028

	IND	Ratio
Doc.	1	
Adj. SC	37.8	
Frame	6.1	
BW	92	97
205	799	104
YW	1330	100
ADG	3.3	
IMF	1.91	78
BF	0.25	96
REA	15.79	112

	CE	BW	WW	YW	ADG	MCE	Milk	MWW	Stay	Doc	YG	Marb	REA	API	TI
EPDs:	9.4	2.3	68.4	103.4	0.22	5.6	30.2	64.4	11.3	18.6	-0.5	0	0.99	108.7	68.7
Rank:	60	70	50	45	40	45	3	10	99	1	30	60	20	90	55

A stout Red Eye son who will sire performance and muscle!





51

### BCLR RED EYE F904W

ASA#: 3480672 Breed: PB SM DOB: 4/5/18  
Homozygous Polled Heterozygous Black

DCR MR MOON SHINE X102  
TNT RED EYE A212  
TNT MISS Y32

TNT PLATINUM R308  
BCLR MISS SLIPPER W904  
BCLR MISS TARYN T714

	IND	Ratio
Doc.	1	
Adj. SC	40.3	
Frame	6.2	
BW	81	109
205	813	105
YW	1324	100
ADG	3.7	
IMF	3.05	124
BF	0.28	108
REA	13.1	93

	CE	BW	WW	YW	ADG	MCE	Milk	MWW	Stay	Doc	YG	Marb	REA	API	TI
EPDs:	13.4	1.1	62.3	94.9	0.2	7.4	23.5	54.6	16.6	11.6	-0.45	-0.06	0.8	121.2	64.8
Rank:	15	35	80	70	60	20	35	60	65	35	60	80	60	60	75

Look at the data set this Red Eye son put together! His dam has a very snug udder and is still in our herd at 10 years of age.



LOT 51

Flush Brothers

52

### BCLR MAIN EVENT F21-1

ASA#: 3480603 Breed: 3/4 SM 1/4 AN DOB: 2/18/18  
Homozygous Polled Heterozygous Black

MR NLC UPGRADE U8676  
TJ MAIN EVENT 503B  
TJ MISS NEW DAY U14

HSF HIGH ROLLER 12T  
WS MOTHER LODE W21  
WS MISS BEEFWAY T7

Individual Record	Doc	Adj. SC	Frame	BW	205	YW	ADG	IMF	BF	REA
	1	38.7	6.4	87	828	1453	3.9	2.34	0.22	14.36
Ratio				ET	ET	ET		78	76	102

	CE	BW	WW	YW	ADG	MCE	Milk	MWW	Stay	Doc	YG	Marb	REA	API	TI
EPDs:	12.7	0.9	85.7	126.8	0.26	6.6	28.9	71.7	16.6	17.4	-0.34	0.16	0.84	129.8	79.8
Rank:	40	60	2	5	20	50	10	1	40	2	25	75	15	40	10

These Main Event sons are special. Not only do they have a top matriarch as their dam, but they are phenotypic standouts with great dispositions as well. W21 has put many bulls in our sale and they have always been crowd favorites.



LOT 52

53

### BCLR MAIN EVENT F21-3

ASA#: 3480606 Breed: 3/4 SM 1/4 AN DOB: 2/25/18  
Homozygous Polled Heterozygous Black

Individual Record	Doc	Adj. SC	Frame	BW	205	YW	ADG	IMF	BF	REA
	1	39.5	6.6	84	762	1317	3.5	1.87	0.16	13.48
Ratio				ET	ET	ET		62	55	95

	CE	BW	WW	YW	ADG	MCE	Milk	MWW	Stay	Doc	YG	Marb	REA	API	TI
EPDs:	12.7	0	77.1	116.1	0.24	6.6	33.2	71.7	15.8	17.1	-0.36	0.18	0.81	128	76.8
Rank:	40	40	10	15	35	50	1	1	50	2	20	75	20	45	20



LOT 53



Docility is a must at Bichler Simmentals & Red Angus



# 54 BCLR ABILENE F552-1

ASA#: 3480638 Breed: 3/4 SM 1/4 AN DOB: 2/21/18  
 Homozygous Polled Homozygous Black DDC

CCR PHENOM 8008A

CCR ABILENE 6018C

CCR MS APPLE 9332W

TNT TANKER U263

KS MISS TANKER Y552

SHOESTRING PRED S28

Individual Record	Doc	Adj. SC	Frame	BW	205	YW	ADG	IMF	BF	REA
	1	39.3	6.7	78	786	1292	3	4.42	0.32	15.91
Ratios				ET	ET	ET		147	110	113

CE	BW	WW	YW	ADG	MCE	Milk	MWW	Stay	Doc	YG	Marb	REA	API	TI
EPDs: 9.8	2.8	82.6	125.6	0.27	8.8	23.1	64.3	15.7	16.4	-0.32	0.39	0.98	132.3	80.3
Rank: 75	95	4	5	15	15	40	10	50	4	30	35	4	35	10



What a flush! These Abilene sons have been standouts since they were born. They all possess the muscle and performance we were hoping for in this mating and are easily noticed in the bull pen. They would be tremendous options for Angus or SimAngus cows!

# 55 BCLR ABILENE F552-2

ASA#: 3480639 Breed: 3/4 SM 1/4 AN DOB: 2/22/18  
 Homozygous Polled Homozygous Black DDC

Individual Record	Doc	Adj. SC	Frame	BW	205	YW	ADG	IMF	BF	REA
	1	42.9	7	108	844	1450	3.8	3.21	0.21	14.93
Ratios				ET	ET	ET		107	72	106

CE	BW	WW	YW	ADG	MCE	Milk	MWW	Stay	Doc	YG	Marb	REA	API	TI
EPDs: 9.9	2.7	82.5	125.7	0.27	9	24.1	65.3	15.8	15.6	-0.29	0.37	0.88	131.7	79.8
Rank: 75	95	4	5	15	15	30	5	50	10	35	35	10	35	10



# 56 BCLR ABILENE F552-3

ASA#: 3480640 Breed: 3/4 SM 1/4 AN DOB: 2/27/18  
 Homozygous Polled Homozygous Black DDF

Individual Record	Doc	Adj. SC	Frame	BW	205	YW	ADG	IMF	BF	REA
	1	41.6	7.1	105	818	1464	4.1	3.82	0.38	14.01
Ratios				ET	ET	ET		127	131	99

CE	BW	WW	YW	ADG	MCE	Milk	MWW	Stay	Doc	YG	Marb	REA	API	TI
EPDs: 7.7	2.7	81.5	124.1	0.27	7.6	24.3	65	15.3	14.8	-0.27	0.46	0.81	132.5	81.1
Rank: 95	95	4	10	15	30	30	10	55	10	40	20	20	35	10



# 57 BCLR ABILENE F552-4

ASA#: 3480641 Breed: 3/4 SM 1/4 AN DOB: 3/3/18  
 Homozygous Polled Homozygous Black DDF

Individual Record	Doc	Adj. SC	Frame	BW	205	YW	ADG	IMF	BF	REA
	1	38.3	6.6	110	886	1402	3.3	3.38	0.37	14.37
Ratios				ET	ET	ET		112	128	102

CE	BW	WW	YW	ADG	MCE	Milk	MWW	Stay	Doc	YG	Marb	REA	API	TI
EPDs: 9.1	2.4	83.1	126.3	0.27	8.6	22.3	63.8	14.8	16.4	-0.4	0.37	1.14	130.1	80.8
Rank: 85	90	3	5	15	20	50	10	60	4	10	35	1	40	10





# 58 BCLR MAINLINE F337-1

ASA#: 3480616 Breed: 3/4 SM 1/4 AN DOB: 2/22/18  
 Homozygous Polled Homozygous Black

TJ MAIN EVENT 503B  
 CDI MAINLINE 265D  
 HOOK'S BEYONCE 82B  
 KS CAPTN JACK T518  
 KS HANNAH Y337  
 KS BECKY N185

Individual Record	Doc	Adj. SC	Frame	BW	205	YW	ADG	IMF	BF	REA
	1	36.4	6.3	91	773	1309	3.2	2.96	0.25	12.73
Ratios				ET	ET	ET		98	86	90

	CE	BW	WW	YW	ADG	MCE	Milk	MWW	Stay	Doc	YG	Marb	REA	API	TI
EPDs:	8.9	1.4	76	111.5	0.22	4.6	31.7	69.6	21.9	18.3	-0.38	0.33	0.93	139.8	77.2
Rank:	85	75	15	25	50	80	2	2	1	1	15	45	10	20	20

We admire the bone, muscle, and length these Y337 sons possess. Their flush sister, lot 114, is a standout in the open heifer offering. Their sire was heavily used in 2018 and his sons will be features in several sales!



# 59 BCLR MAINLINE F337-2

ASA#: 3480617 Breed: 3/4 SM 1/4 AN DOB: 3/6/18  
 Homozygous Polled Heterozygous Black

Individual Record	Doc	Adj. SC	Frame	BW	205	YW	ADG	IMF	BF	REA
	1	36.5	6.4	98	840	1296	3	3.68	0.18	15.82
Ratios				ET	ET	ET		122	62	112

	CE	BW	WW	YW	ADG	MCE	Milk	MWW	Stay	Doc	YG	Marb	REA	API	TI
EPDs:	11.4	2.3	84.8	123.4	0.24	6.1	22.7	65	22.1	17.5	-0.43	0.24	1.28	140.5	78.9
Rank:	60	90	2	10	35	55	45	10	1	2	10	60	1	20	15



KS Hannah Y337 • Dam of Lots 58 and 59

# 60 BCLR MAINLINE F009

ASA#: 3480591 Breed: 3/4 SM 1/4 AN DOB: 2/24/18  
 Homozygous Polled Homozygous Black

TJ MAIN EVENT 503B  
 CDI MAINLINE 265D  
 HOOK'S BEYONCE 82B  
 SRS RIGHT-ON 22R  
 HRM/TRPH RIGHT ON X009  
 NLC MESMA LG140

	IND	Ratio
Doc.	1	
Adj. SC	38	
Frame	7.5	
BW	97	93
205	862	112
YW	1519	115
ADG	4.1	
IMF	2.26	92
BF	0.26	100
REA	14.36	102

	CE	BW	WW	YW	ADG	MCE	Milk	MWW	Stay	Doc	YG	Marb	REA	API	TI
EPDs:	8	2.5	84.4	129.8	0.28	2.4	25.3	67.4	24.6	16	-0.38	0.18	0.95	138.3	76.8
Rank:	90	90	2	3	10	99	25	3	1	5	15	75	5	20	20

Powerhouse out of the X009 donor. His dam is a great cow that milks well, has a great disposition and always looks the part. This bull will add frame, performance and dimension at every angle.





**61 BCLR HOME RUN F609**

	IND	Ratio
Doc.	1	
Adj. SC	33.6	
Frame	5.8	
BW	68	118
205	789	102
YW	1362	103
ADG	3.6	
IMF	2.31	94
BF	0.16	62
REA	14.99	106

ASA#: 3480649 Breed: 3/4 SM 1/4 AN DOB: 2/26/18  
Homozygous Polled Heterozygous Black

**ELLINGSON IDENTITY 9104**  
**KS HOME RUN B23**  
**KS ZOEY Z661**

**W/C EXECUTIVE ORDER 8543B**  
**BCLR MISS EXECUTIVE D609**  
**BCLR MISS JOKER**

	CE	BW	WW	YW	ADG	MCE	Milk	MWW	Stay	Doc	YG	Marb	REA	API	TI
EPDs	14.5	-1	75.5	120.3	0.28	7.8	28	65.7	17	15.6	-0.41	0.21	1.23	137.2	78.2
Rank	20	20	15	10	10	30	10	5	35	10	10	70	1	25	15

The Home Run bull has been a tremendous asset to use on our heifers. Here is a higher performing son out of a very nice 2 year old dam. I would recommend him for heifers.

**62 BCLR HOME RUN F653**

	IND	Ratio
Doc.	1	
Adj. SC	38.1	
Frame	6.2	
BW	74	112
205	795	103
YW	1348	102
ADG	3.5	
IMF	2.04	83
BF	0.33	127
REA	12.47	89

ASA#: 3480659 Breed: 3/4 SM 1/4 AN DOB: 3/9/18  
Homozygous Polled Heterozygous Black

**ELLINGSON IDENTITY 9104**  
**KS HOME RUN B23**  
**KS ZOEY Z661**

**CCR WIDE RANGE 9005A**  
**BCLR MISS WIDE RANGE D653**  
**WS MOTHER LODE W21**

	CE	BW	WW	YW	ADG	MCE	Milk	MWW	Stay	Doc	YG	Marb	REA	API	TI
EPDs	16.5	-1.7	73.1	114.1	0.26	10.1	24.8	61.3	17.8	17.6	-0.32	0.1	1.04	134.7	74.2
Rank	10	15	20	20	20	5	25	15	25	2	30	85	3	30	30

This bulls dam is part of our choice lot 70. We think very highly of her and have already made her a donor! He is a favorite of the Home Runs we are offering this year. I would recommend him for heifers.

**63 BCLR HOME RUN F649**

	IND	Ratio
Doc.	1	
Adj. SC	36.7	
Frame	5	
BW	74	112
205	730	95
YW	1283	97
ADG	3.5	
IMF	2.65	108
BF	0.22	85
REA	13.52	96

ASA#: 3480657 Breed: 3/4 SM 1/4 AN DOB: 3/31/18  
Homozygous Polled Heterozygous Black

**ELLINGSON IDENTITY 9104**  
**KS HOME RUN B23**  
**KS ZOEY Z661**

**CCR WIDE RANGE 9005A**  
**BCLR MISS WIDE RANGE D649**  
**WS MOTHER LODE W21**

	CE	BW	WW	YW	ADG	MCE	Milk	MWW	Stay	Doc	YG	Marb	REA	API	TI
EPDs	15.7	-0.8	75.9	118.8	0.27	9.5	19.5	57.4	14.9	12.8	-0.35	0.07	1.06	125.8	73.7
Rank	15	25	15	15	15	10	75	35	60	30	20	90	2	50	30

We lost this bull's dam shortly after he was born so his performance was very altered. If you study his phenotype you will realize he will be a nice option to use for easy calving and you'll want to keep all the females! I would recommend him for heifers.

**64 BCLR WIDE LOAD F511**

	IND	Ratio
Doc.	1	
Adj. SC	40.8	
Frame	7.1	
BW	100	86
205	934	121
YW		N/A
ADG	3.4	
IMF	3.12	
BF	0.35	
REA	13.72	

ASA#: 3480633 Breed: 3/4 SM 1/4 AN DOB: 5/1/18  
Homozygous Polled Heterozygous Black

**CCR WIDE RANGE 9005A**  
**BCLR WIDE LOAD C21-3**  
**WS MOTHER LODE W21**

**S A V BRILLIANCE 8077**  
**BCLR MISS BRILLIANCE C511**  
**BCLR MISS REGAN R513**

	CE	BW	WW	YW	ADG	MCE	Milk	MWW	Stay	Doc	YG	Marb	REA	API	TI
EPDs	8.2	3.6	83.1	125.5	0.27	4	20.4	61.9	18.3	14.7	-0.28	0.15	0.85	120.8	72.9
Rank	90	99	3	5	15	85	65	15	20	10	40	80	15	60	35

The youngest bull in the sale, but study his performance and you'll see why he made the sale! Highest adj WW in the offering! He is a grandson of our Regan donor.



**65 BCLR INNOVATOR F553**

	IND	Ratio
Doc.	1	
Adj. SC	37.5	
Frame	5.8	
BW	89	97
205	834	108
YW	1428	108
ADG	3.8	
IMF	2.73	111
BF	0.21	81
REA	13.88	99

ASA#: 3480644 Breed: 3/4 SM 1/8 AN 1/8 AR DOB: 2/25/18  
Homozygous Polled Heterozygous Black

**TJ MAIN EVENT 503B**  
**CDI INNOVATOR 325D**  
**CDI MS SHEAR FORCE 49U**

**CDI VEGAS 26X**  
**BCLR MISS VEGAS C553**  
**BCLR MISS TUBBY X01**

	CE	BW	WW	YW	ADG	MCE	Milk	MWW	Stay	Doc	YG	Marb	REA	API	TI
EPDs	10	0.9	83.5	126.2	0.27	5.9	24.6	66.3	19.7	11.8	-0.34	0.23	0.85	135.8	79.5
Rank	75	60	3	5	15	60	30	4	10	45	25	65	15	25	10

This bull is quite a looker and it makes sense when you see his pedigree! The Innovators are consistently good and his dam is one of our best Vegas daughters. Look at the set of numbers he put together!





66

**BCLR INNOVATOR F604**

	IND	Ratio
Doc.	1	
Adj. SC	39.1	
Frame	5.2	
BW	76	112
205	765	99
YW	1340	101
ADG	3.6	
IMF	3.37	137
BF	0.37	142
REA	14.88	106

**TJ MAIN EVENT 503B**  
**CDI INNOVATOR 325D**  
**CDI MS SHEAR FORCE 49U**  
**CCR WIDE RANGE 9005A**  
**HSR MS WIDE RANGE C604**  
**HSR MS TOP GRADE A160**

	CE	BW	WW	YW	ADG	MCE	Milk	MWW	Stay	Doc	YG	Marb	REA	API	TI
EPDs:	13.5	0	81.4	127.3	0.29	7.7	24.2	64.8	18.9	15.3	-0.37	0.32	1.03	145.1	82.3
Rank:	30	40	4	4	10	30	30	10	15	10	15	45	3	15	5

Light BW Innovator son who is packed full of thickness and rib. I expect this bull to moderate and produce easy fleshing, stout progeny. His dam is a beautiful Wide Range we selected at the ND State Simmental Sale two years ago from Hansen Simmentals. His maternal sister is lot 95.



**LOT 66**



**LOT 68**

68

**BCLR HOME RUN F652**

	IND	Ratio
Doc.	1	
Adj. SC	36.2	
Frame	5.4	
BW	72	114
205	739	96
YW	1241	94
ADG	3.2	
IMF	1.97	80
BF	0.22	85
REA	15.67	111

**ELLINGSON IDENTITY 9104**  
**KS HOME RUN B23**  
**KS ZOEY Z661**  
**CDI VEGAS 26X**  
**BCLR MISS VEGAS D652**  
**BCLR MISS TUBBY X01**

	CE	BW	WW	YW	ADG	MCE	Milk	MWW	Stay	Doc	YG	Marb	REA	API	TI
EPDs:	18.4	-1.6	64.7	101.2	0.23	11.8	27.6	59.9	15.1	6.5	-0.36	0.08	1.06	127.2	69.2
Rank:	3	15	50	45	40	1	10	20	55	95	20	90	2	45	55

This bull's dam is a full sister to lot 65's dam. Great cow family and here is a calving ease option to tap into those genetics. I would recommend him for heifers.

69

**BCLR HOME RUN F616**

	IND	Ratio
Doc.	1	
Adj. SC	34.2	
Frame	6.1	
BW	70	116
205	774	100
YW	1346	102
ADG	3	
IMF	2.84	115
BF	0.34	131
REA	13.77	98

**ELLINGSON IDENTITY 9104**  
**KS HOME RUN B23**  
**KS ZOEY Z661**  
**MR NLC ENTREPRENEUR 1227**  
**BCLR MISS ENT D616**  
**KS HANNAH Y337**

	CE	BW	WW	YW	ADG	MCE	Milk	MWW	Stay	Doc	YG	Marb	REA	API	TI
EPDs:	18.3	-1	73.6	113.3	0.25	11.7	22.8	59.5	17.9	14.2	-0.32	0.33	0.99	148.4	79.2
Rank:	3	20	20	20	25	2	45	25	25	15	30	45	4	10	15

A grandson of our Y337 donor, and out of a favorite two year old heifer, this bull just keeps getting better with age. Look at the impressive data set he put together! I would recommend him for heifers.





*Offering a choice of this donor or one of her daughters!*



**W21**

We really wanted to make this sale special and offering pick of a cow family that has influenced our program like no other is the best way we knew how! Every one of these females is donor quality in her own right and with so many options to chose from, you can literally pick exactly what your program needs. The W21 cow has sons scattered all across North America, but this is the first time we have offered a direct daughter. In addition to influencing our program, both the Lazy C Diamond Ranch and Wilkinson Farms Simmentals are building a program around her daughters as well. This cow has a perfect, huge foot that would make most herd bulls jealous, massive rib shape, a big hip, and a presence that always turns heads! We see this in every one of her daughters which makes us excited for their future impact here. We would like to reserve a flush (6 embryo minimum) on the female that is selected. The legacy W21 will leave behind has only just begun and we are excited to see who you select!

**70 SELLING 5 IVF EMBRYOS**

Breed: PB SM Homozygous Polled

- TRIPLE C SINGLETARY S3H
- CCR COWBOY CUT 5048Z
- CCR MS 4045 TIME 7322T
- HSF HIGH ROLLER 12T
- WS MOTHER LODER W21
- WS MISS BEEFWAY T7

	CE	BW	WW	YW	ADG	MCE	Milk	MWW	Stay	Doc	YG	Marb	REA	API	TI
EPDs:	12.9	1.6	82.7	118	0.23	8.6	27.9	69.2	18.8	19.2	-0.39	0.17	0.93	142.7	81.7
Rank:	15	50	5	15	35	10	10	2	30	1	90	20	30	10	4

Offering 5 embryos and guaranteeing 2 pregnancies if done by a certified embryologist.

**70A WS MOTHER LODER W21**

ASA#: 2499586 Breed: PB SM DOB: 1/31/09  
Homozygous Polled Heterozygous Black

- TJ 57J THE GAMBLER
- HSF HIGH ROLLER 12T
- HSF RED FORTUNES SIS 33
- WS BEEF MAKER R13
- WS MISS BEEFWAY T7
- WS MISS SPEEDWAY R111

	IND	Ratio
Doc.	1	111
BW	79	102
205	772	92
YW	972	

	CE	BW	WW	YW	ADG	MCE	Milk	MWW	Stay	Doc	YG	Marb	REA	API	TI
EPDs:	12.8	0.6	73.8	110.4	0.23	8.6	29.2	66.1	17.3	19.4	-0.44	-0.07	0.88	126.5	72.6
Rank:	20	25	25	30	35	10	4	5	55	1	65	80	40	45	30

Open and ready to flush.







**LOT 70B**

**70B BCLR MISS WIDE RNGE C563**

ASA#: 3071336 Breed: PB SM DOB: 3/20/15  
Homozygous Polled Heterozygous Black

	IND	Ratio
Doc.	1	
BW	79	ET
205	766	ET
YW		

- S D S GRADUATE 006X
- CCR WIDE RANGE 9005A
- CCR MS APPLE 9332W
- HSF HIGH ROLLER 12T
- WS MOTHER LODE W21
- WS MISS BEEFWAY T7

	CE	BW	WW	YW	ADG	MCE	Milk	MWW	Stay	Doc	YG	Marb	REA	API	TI
EPDs:	14.1	0.3	75.2	114.9	0.25	8.1	21.3	58.8	18.3	15	-0.54	-0.05	1.26	133.3	74.2
Rank:	10	20	20	20	20	10	55	30	40	5	15	75	1	25	25

AI'd on 5/17/18 to Colorado Bridle Bit E752. Pasture Exposed to BCLR Power Grid D611-1 from 5/20/18-7/20/18. Ultrasound safe to D611-1 and due 3/21/19 with a heifer.

CE	BW	WW	YW	ADG	MCE	Milk	MWW	Stay	Doc	YG	Marb	REA	API	TI
11.8	1.6	77.9	118.6	0.3	7.3	25.6	64.5	18.4	14.7	-0.34	0.1	0.97	118.4	70.1



**LOT 70C**

**70C BCLR MISS RED EYE C587**

ASA#: 3168073 Breed: PB SM DOB: 8/22/15  
Homozygous Polled Red

	IND	Ratio
Doc.	1	
BW	81	105
205	635	98
YW		

- DCR MR MOON SHINE X102
- TNT RED EYE A212
- TNT MISS Y32
- HSF HIGH ROLLER 12T
- WS MOTHER LODE W21
- WS MISS BEEFWAY T7

	CE	BW	WW	YW	ADG	MCE	Milk	MWW	Stay	Doc	YG	Marb	REA	API	TI
EPDs:	12.7	1.7	73.8	113	0.24	8.1	20.4	57.3	16.3	17.9	-0.39	-0.08	0.87	122	70
Rank:	20	50	25	20	25	10	65	40	70	1	90	85	40	60	45

AI'd on 5/17/18 to BCLR Direction E38-1. Pasture Exposed to BCLR Power Grid D611-1 from 5/20/18-7/20/18. Ultrasound safe to D611-1 and due 3/19/19 with a heifer.

CE	BW	WW	YW	ADG	MCE	Milk	MWW	Stay	Doc	YG	Marb	REA	API	TI
11.1	2.3	77.2	117.6	0.3	7.3	25.2	63.7	17.4	16.2	-0.27	0.09	0.77	119.5	70.3

**70D BCLR MISS WIDE RNGE D653**

ASA#: 3168610 Breed: PB SM DOB: 3/23/16  
Homozygous Polled Heterozygous Black

	IND	Ratio
Doc.	1	
BW	76	ET
205	753	ET
YW		

- S D S GRADUATE 006X
- CCR WIDE RANGE 9005A
- CCR MS APPLE 9332W
- HSF HIGH ROLLER 12T
- WS MOTHER LODE W21
- WS MISS BEEFWAY T7

	CE	BW	WW	YW	ADG	MCE	Milk	MWW	Stay	Doc	YG	Marb	REA	API	TI
EPDs:	13.9	0.5	80.3	121.2	0.26	8.3	21.1	61.2	15.2	19.3	-0.44	-0.09	1.19	125.7	75.5
Rank:	10	25	10	10	15	10	60	20	85	1	65	85	2	45	20

AI'd on 5/17/18 to WS Proclamation E202. Pasture Exposed to BCLR Power Grid D611-1 from 5/20/18-7/20/18. Ultrasound safe to D611-1 and due 3/14/19 with a bull.

CE	BW	WW	YW	ADG	MCE	Milk	MWW	Stay	Doc	YG	Marb	REA	API	TI
11.7	1.7	80.4	121.7	0.3	7.4	25.5	65.7	16.9	16.9	-0.29	0.08	0.93	114.5	70.7



**LOT 70D**





# 70E BCLR MISS AUGUST D685

ASA#: 3307212 Breed: 3/4 SM 1/4 AN DOB: 8/12/16  
 Homozygous Polled Heterozygous Black

	IND	Ratio
Doc.	1	
BW	80	ET
205	603	ET
YW		

DIKEMANS SURE BET  
 TJ SHARPER IMAGE 809U  
 T J MISS BANDO S27

HSF HIGH ROLLER 12T  
 WS MOTHER LODE W21  
 WS MISS BEEFWAY T7

	CE	BW	WW	YW	ADG	MCE	Milk	MWW	Stay	Doc	YG	Marb	REA	API	TI
EPDs:	12.3	1.1	75.9	116.2	0.25	8.7	30.3	68.2	19.1	19.2	-0.24	0.08	0.54	125.8	71.4
Rank:	45	65	15	15	25	15	3	3	15	1	50	90	70	50	40

Pasture Exposed to KS Home Run B23 from 5/20/18-6/20/18 then to ES EB40 from 6/20/18-8/20/18. Ultrasound safe to Home Run and due 3/16/19 with a heifer.

	CE	BW	WW	YW	ADG	MCE	Milk	MWW	Stay	Doc	YG	Marb	REA	API	TI
	15.4	-0.9	72.1	113.5	0.3	10.0	26.7	62.6	18.0	17.2	-0.22	0.19	0.72	135.8	74.3



# 70F BCLR MISS IMAGE D686

ASA#: 3307222 Breed: 3/4 SM 1/4 AN DOB: 8/15/16  
 Homozygous Polled Heterozygous Black

	IND	Ratio
Doc.	1	
BW	85	ET
205	525	ET
YW		

DIKEMANS SURE BET  
 TJ SHARPER IMAGE 809U  
 T J MISS BANDO S27

HSF HIGH ROLLER 12T  
 WS MOTHER LODE W21  
 WS MISS BEEFWAY T7

	CE	BW	WW	YW	ADG	MCE	Milk	MWW	Stay	Doc	YG	Marb	REA	API	TI
EPDs:	13.4	0.8	74.4	113.4	0.24	10.2	26.5	63.6	15	20.5	-0.22	0.03	0.42	115.6	69.1
Rank:	30	60	20	20	35	5	15	10	55	1	55	95	90	70	55

Open. Sells with fall bull calf.

# 70F Calf BCLR MAINLINE F686

ASA#: 3490031 Breed: 3/4 SM 1/4 AN DOB: 8/9/18  
 Homozygous Polled

	IND	Ratio
Doc.	1	
BW	81	107
205		
YW		

TJ MAIN EVENT 503B  
 CDI MAINLINE 265D  
 HOOK'S BEYONCE 82B  
 TJ SHARPER IMAGE 809U  
 BCLR MISS IMAGE D686  
 WS MOTHER LODE W21

	CE	BW	WW	YW	ADG	MCE	Milk	MWW	Stay	Doc	YG	Marb	REA	API	TI
EPDs:	15.1	-0.1	76.8	113.9	0.23	9.5	25.2	63.6	15.7	17.4	-0.26	0.19	0.58	130	75.7
Rank:	15	35	15	20	40	10	25	10	50	2	45	70	60	40	25

# 70G BCLR MISS BALDY E704

ASA#: 3322997 Breed: PB SM DOB: 2/16/17  
 Homozygous Polled Heterozygous Black

	IND	Ratio
Doc.	1	
BW	95	ET
205	726	ET
YW	1073	ET

REMINGTON ON TARGET 2S  
 REMINGTON LOCK N LOAD54U  
 BAR15 MISS KNIGHT78E-51G

HSF HIGH ROLLER 12T  
 WS MOTHER LODE W21  
 WS MISS BEEFWAY T7

	CE	BW	WW	YW	ADG	MCE	Milk	MWW	Stay	Doc	YG	Marb	REA	API	TI
EPDs:	11.8	1.1	72.7	115.4	0.27	6.3	23.2	59.5	17.8	15.5	-0.55	-0.08	1.18	126.1	71.2
Rank:	30	35	30	20	10	35	35	30	45	4	10	85	2	45	40

AI'd on 5/15/18 to WS Proclamation E202. Pasture Exposed to KS Home Run B23 from 5/20/18-6/20/18 then to ES EB40 from 6/20/18-8/20/18. Ultrasound safe to Home Run and due 3/17/19 with a bull.

	CE	BW	WW	YW	ADG	MCE	Milk	MWW	Stay	Doc	YG	Marb	REA	API	TI
	15.1	-0.9	70.5	113.1	0.3	8.8	23.1	58.3	17.4	15.4	-0.38	0.11	1.04	124	69.7







## 70H BCLR MISS IMAGE E761

ASA#: 3322843 Breed: 3/4 SM 1/4 AN DOB: 3/22/17  
Homozygous Polled Heterozygous Black

	IND	Ratio
Doc.	1	
BW	90	ET
205	707	ET
YW	1067	ET

DIKEMANS SURE BET  
TJ SHARPER IMAGE 809U  
T J MISS BANDO S27

HSF HIGH ROLLER 12T  
WS MOTHER LODE W21  
WS MISS BEEFWAY T7

	CE	BW	WW	YW	ADG	MCE	Milk	MWW	Stay	Doc	YG	Marb	REA	API	TI
EPDs:	9.2	1	74.6	114.9	0.25	6.6	30.9	68.1	16.2	20.9	-0.21	0.06	0.68	114.6	69.8
Rank:	85	65	15	20	25	50	2	3	45	1	60	90	40	75	50

AI'd on 5/15/18 to WS Proclamation E202. Pasture Exposed to KS Home Run B23 from 5/20/18-6/20/18 then to ES EB40 from 6/20/18-8/20/18. Ultrasound safe to Proclamation and due 2/22/19 with a bull.

CE	BW	WW	YW	ADG	MCE	Milk	MWW	Stay	Doc	YG	Marb	REA	API	TI
13.1	0.9	79.5	121.3	0.3	9.0	32.6	72.2	15.6	19.4	-0.29	0.2	0.86	121.5	75.1

## 70I BCLR MISS CASH FLOW F804

ASA#: 3480693 Breed: PB SM DOB: 2/16/18  
Homozygous Polled Heterozygous Black

	IND	Ratio
Doc.	1	
BW	78	109
205	663	99
YW	1012	93

CCR WIDE RANGE 9005A  
BCLR CASH FLOW C820  
BCLR MISS MONICA U820

HSF HIGH ROLLER 12T  
WS MOTHER LODE W21  
WS MISS BEEFWAY T7

	CE	BW	WW	YW	ADG	MCE	Milk	MWW	Stay	Doc	YG	Marb	REA	API	TI
EPDs:	14.1	-0.2	77.8	117	0.25	7.4	24.2	63	18.4	17	-0.48	-0.01	1.11	136.8	77.2
Rank:	10	15	15	15	20	20	30	15	35	2	45	60	5	20	15



## 70J BCLR MISS EVENT F818

ASA#: 3480708 Breed: 3/4 SM 1/4 AN DOB: 2/23/18  
Homozygous Polled Homozygous Black

	IND	Ratio
Doc.	1	
BW	84	ET
205	718	ET
YW	1023	ET

MR NLC UPGRADE U8676  
TJ MAIN EVENT 503B  
TJ MISS NEW DAY U14

HSF HIGH ROLLER 12T  
WS MOTHER LODE W21  
WS MISS BEEFWAY T7

	CE	BW	WW	YW	ADG	MCE	Milk	MWW	Stay	Doc	YG	Marb	REA	API	TI
EPDs:	13	-0.1	79.8	117.5	0.24	6.7	27.5	67.4	16.3	16.5	-0.32	0.22	0.75	132.2	78.7
Rank:	35	35	10	15	35	45	10	3	40	3	30	65	30	35	15







# 70K BCLR MISS INNOVATOR F820

ASA#: 3480710 Breed: PB SM DOB: 2/25/18  
 Homozygous Polled Heterozygous Black

	IND	Ratio
Doc.	1	
BW	99	ET
205	772	ET
YW	1180	ET

**TJ MAIN EVENT 503B**  
**CDI INNOVATOR 325D**  
**CDI MS SHEAR FORCE 49U**

**HSF HIGH ROLLER 12T**  
**WS MOTHER LODGE W21**  
**WS MISS BEEFWAY T7**

	CE	BW	WW	YW	ADG	MCE	Milk	MWW	Stay	Doc	YG	Marb	REA	API	TI
EPDs	14.2	0.2	81	124.3	0.27	8.2	31.6	72.1	21.5	14.9	-0.38	0.19	0.8	154.8	84.2
Rank:	10	20	10	10	10	10	2	1	3	10	90	15	60	2	2

**LOT 70K**

## Bred Heifers Service Sires

Reg #	Name	Breed Percentages	CE	BW	WW	YW	ADG	MCE	Milk	MWW	Stay	Doc	CW	YG	Marb	BF	REA	API	TI
3080241	BIEBER DRIVEN B105	PB 1B AR	18	-3.9	67.3	110.3	0.27	9.3	29.3	62.9	15	17.8	31.5	0.02	0.44	0.02	0.4	137.7	80.4
2850519	KS HOME RUN B23	1/2 SM 1/2 AN	18.4	-2.9	68.2	110.7	0.27	11.3	23	57	16.9	15.2	37.8	-0.2	0.29	-0.011	0.89	145.6	76.9
2977402	KS LITTLE JOHN C85	PB SM	17.1	-2.5	59.2	90.5	0.2	11.1	35.1	64.6	16.8	16.5	23.8	-0.3	0.03	-0.094	0.39	135.9	70.5
3307211	BCLR POWER GRID D611-1	1/2 SM 1/4 AN 1/4 AR	9.4	2.8	80.5	122.2	0.26	6.5	29.9	70.1	18.5	14.4	38.6	-0.14	0.25	-0.018	0.67	128.4	75.5
3210738	IR IMPERIAL D948	PB SM	19	-0.6	71.2	105.9	0.22	11.7	28.4	63.9	21.1	12.1	10.4	-0.38	0.58	-0.059	0.73	178.6	88.9
3254156	WS PROCLAMATION E202	PB SM	17	0.8	84.3	127.6	0.27	11.4	34.2	76.3	14.9	17.9	47.7	-0.36	0.33	-0.072	1.04	152.3	89.2
3330096	ES EB40	1/2 SM 7/16 AR 1/16 AN	13.6	-1.2	76.5	114.7	0.24	5.8	18.5	56.7	16.7	17	18.3	-0.18	0.19	-0.033	0.41	132.1	75.7
Reg #	Name	Breed Percentages	CE	BW	WW	YW	ADG	CEM	Milk	MWW	Stay	Doc	CW	YG	Marb	BF	REA	HB	GM
3503795	PIE Husker 5500	PB 1A AR	13	-2.7	69	117	0.3	10	24	*	19	*	36	0.18	0.48	0.04	0.07	209	51
3080241	BIEBER DRIVEN B105	PB 1B AR	18	-3.9	67.3	110.3	0.27	9.3	29.3	62.9	15	17.8	31.5	0.02	0.44	0.02	0.4	137.7	80.4

Please note: Because the bred heifers are due within 10 days of the sale, we ask that you be prepared to take them home on sale day. If you cannot attend or cannot haul after the sale, please make prior arrangements to get them home in a timely manner.

Planned matings were calculated on each bred heifer and the sire that she was confirmed to. They are listed in a table format (like the one here) beneath each lot:

CE	BW	WW	YW	ADG	MCE	Milk	MWW	Stay	Doc	YG	Marb	REA	API	TI
11.1	2.3	77.2	117.6	0.3	7.3	25.2	63.7	17.4	16.2	-0.27	0.09	0.77	119.5	70.3

# 71 BCLR MISS AMBITION E731

ASA#: 3322935 Breed: PB SM DOB: 2/25/17  
 Homozygous Polled

	IND	Ratio
Doc.	1	
BW	89	99
205	663	96
YW	950	95

**HOOK'S XPECTATION 36X**  
**CDI AMBITION 255C**  
**HSF RED FORTUNES SIS 33**

**CDI VEGAS 26X**  
**BCLR MISS VEGAS A318**  
**BCLR MISS ROMA W920**

	CE	BW	WW	YW	ADG	MCE	Milk	MWW	Stay	Doc	YG	Marb	REA	API	TI
EPDs	9.7	2.2	72.6	104.3	0.2	5.6	30.8	67.1	19.9	12.4	-0.39	0.11	0.64	132.8	73.4
Rank:	55	65	30	45	60	45	2	4	15	25	90	30	90	25	30

What a way to start our bred offering. These Ambition daughters make us excited for calving season. We are planning to flush E731s dam and retain her full brother as a herdsire. She is one of our best Ambitions in the flesh and on paper and will make a tremendous brood cow. AI'd 5/15/18 to KS Little John C85. Pasture Exposed to ES EB40 from 5/20/18-8/20/18. Ultrasound safe to ES EB40 and due 3/16/19 with a bull.

CE	BW	WW	YW	ADG	MCE	Milk	MWW	Stay	Doc	YG	Marb	REA	API	TI
11.7	0.5	74.6	109.5	0.2	5.7	24.7	61.9	18.3	14.7	-0.29	0.15	0.53	120.2	70



**LOT 71**







**LOT 72**

**72 BCLR MISS AMBITION E733**

ASA#: 3322854 Breed: PB SM DOB: 2/26/17  
Homozygous Polled

	IND	Ratio
Doc.	1	
BW	99	90
205	796	115
YW	1069	107

HOOK'S XPECTATION 36X  
CDI AMBITION 255C  
HSF RED FORTUNES SIS 33

LBR CROCKETT R81  
BCLR MISS WENDI W917

BCLR MISS SABRINA S604

	CE	BW	WW	YW	ADG	MCE	Milk	MWW	Stay	Doc	YG	Marb	REA	API	TI
EPDs:	3.1	5.9	88.7	130.9	0.26	0.8	31.4	75.7	18.3	16.7	-0.41	0.3	0.75	131.8	82.4
Rank:	99	99	2	3	15	99	2	1	40	2	80	5	75	30	3

A high performance Ambition daughter that is sure to be a herd bull maker. Her full sister sells as lot 101. AI'd on 5/15/18 to Bieber Driven B105. Pasture Exposed to ES EB40 from 5/20/18-8/20/18. Ultrasound safe to Driven and due 2/22/19 with a bull.

CE	BW	WW	YW	ADG	MCE	Milk	MWW	Stay	Doc	YG	Marb	REA	API	TI
10.6	1.0	78.0	120.6	0.3	5.1	30.4	69.3	16.7	17.3	-0.2	0.37	0.58	151.3	88.2

**74 BCLR MISS RED EYE E734**

ASA#: 3322875 Breed: PB SM DOB: 2/27/17  
Homozygous Polled

	IND	Ratio
Doc.	1	
BW	76	110
205	693	100
YW	1017	102

DCR MR MOON SHINE X102  
TNT RED EYE A212  
TNT MISS Y32

WS ALL IN W111  
BCLR MISS ALL IN B406

BCLR MISS MAKER Z235

	CE	BW	WW	YW	ADG	MCE	Milk	MWW	Stay	Doc	YG	Marb	REA	API	TI
EPDs:	12.2	0.6	66.9	99.2	0.2	8.4	32.9	66.3	14.6	18.8	-0.45	0.01	0.8	121.9	70.6
Rank:	25	25	55	55	60	10	1	4	90	1	60	55	60	60	40

E734 goes back to our L9 donor. Her dam has a son working for Ben Kleppe, Crosshair Simmentals. AI'd 5/15/18 to KS Little John C85. Pasture Exposed to ES EB40 from 5/20/18-8/20/18. Ultrasound safe to Little John and due 2/22/19 with a bull.

CE	BW	WW	YW	ADG	MCE	Milk	MWW	Stay	Doc	YG	Marb	REA	API	TI
14.7	-1.0	63.1	94.9	0.2	9.8	34.0	65.5	15.7	17.7	-0.38	0.02	0.6	110.9	63.5



**LOT 73**

**73 BCLR MISS AMBITION E769**

ASA#: 3322908 Breed: PB SM DOB: 4/21/17  
Homozygous Polled

	IND	Ratio
Doc.	2	
BW	88	101
205	621	90
YW	912	91

HOOK'S XPECTATION 36X  
CDI AMBITION 255C  
HSF RED FORTUNES SIS 33

KR MR SHEAR FORCE W17  
BCLR MISS FORCE Z223

BCLR MISS WINIFRED W922

	CE	BW	WW	YW	ADG	MCE	Milk	MWW	Stay	Doc	YG	Marb	REA	API	TI
EPDs:	7.4	3.4	69.3	99.5	0.19	3.7	25.4	60	19	11.9	-0.34	-0.09	0.68	113.3	63.8
Rank:	85	90	45	55	70	80	20	25	30	30	99	85	85	85	80

Attractive Ambition daughter here. Dam has a perfect udder and we expect the same of E769. Full sister sells as lot 102. AI'd 5/15/18 to KS Little John C85. Pasture Exposed to ES EB40 from 5/20/18-8/20/18. Ultrasound safe to Little John and due 2/22/19 with a heifer.

CE	BW	WW	YW	ADG	MCE	Milk	MWW	Stay	Doc	YG	Marb	REA	API	TI
12.3	0.5	64.3	95.0	0.2	7.4	30.3	62.3	17.9	14.2	-0.32	-0.03	0.54	106.7	60.2



**LOT 74**



**75 BCLR MISS PRM TIME E729**

	IND	Ratio
Doc.	2	
BW	81	103
205	663	96
YW	919	92

ASA#: 3322901 Breed: PB SM DOB: 2/25/17

WS PRIME BEEF Z8  
WS PRIME TIME B6  
WS MAJESTIC Z133

TNT RED EYE A212  
BCLR MISS RED EYE C547  
BCLR MISS COPPER Y115

	CE	BW	WW	YW	ADG	MCE	Milk	MWW	Stay	Doc	YG	Marb	REA	API	TI
EPDs:	13	0.6	70.1	107.6	0.23	8	24.5	59.5	18	10.5	-0.33	-0.03	0.68	128.7	70.4
Rank:	15	25	40	35	35	10	25	30	45	55	99	70	85	40	45

The Prime Time daughters are quickly being noted for their maternal ability and we expect no less from E729. We like her young Red Eye dam. AI'd 5/15/18 to KS Little John C85. Pasture Exposed to ES EB40 from 5/20/18-8/20/18. Ultrasound safe to ES EB40 and due 3/16/19 with a heifer.

CE	BW	WW	YW	ADG	MCE	Milk	MWW	Stay	Doc	YG	Marb	REA	API	TI
13.3	-0.3	73.3	111.2	0.2	6.9	21.5	58.1	17.4	13.8	-0.26	0.08	0.55	118.1	68.5



**76 BCLR MISS PRM TIME E706**

	IND	Ratio
Doc.	1	
BW	73	113
205	640	92
YW	974	97

ASA#: 3322855 Breed: 3/4 SM 1/4 AR DOB: 2/16/17  
Homozygous Polled

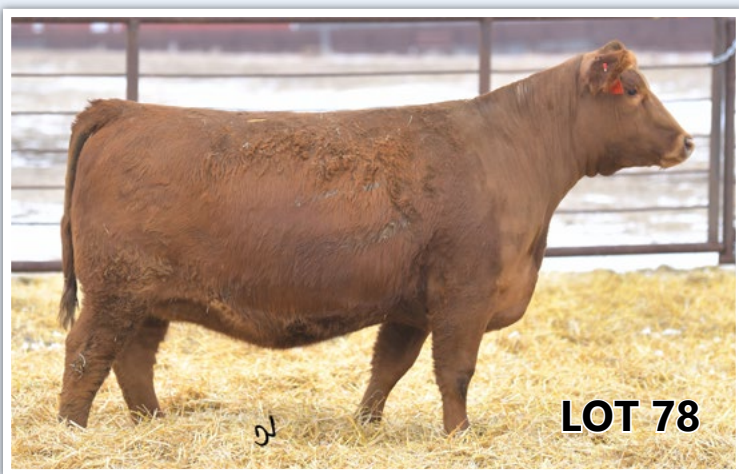
WS PRIME BEEF Z8  
WS PRIME TIME B6  
WS MAJESTIC Z133

BCLR SHAMWOW W611  
BCLR MISS SHAMWOW C512  
KS MISS COMBINATION S980

	CE	BW	WW	YW	ADG	MCE	Milk	MWW	Stay	Doc	YG	Marb	REA	API	TI
EPDs:	12.6	-0.1	73.8	112.8	0.24	7.5	23.4	60.2	19.1	12.7	-0.27	0.16	0.72	143.3	77.8
Rank:	40	35	20	20	35	30	40	20	15	30	40	75	35	15	15

E706 has a who's who maternal pedigree. Not only are the Prime Times proving their worth as cows, Shamwow is a great bull to back up any pedigree. She is dark red to boot! AI'd 5/15/18 to KS Little John C85. Pasture Exposed to ES EB40 from 5/20/18-8/20/18. Ultrasound safe to Little John and due 2/22/19 with a heifer.

CE	BW	WW	YW	ADG	MCE	Milk	MWW	Stay	Doc	YG	Marb	REA	API	TI
14.9	-1.3	66.5	101.7	0.2	9.3	29.3	62.4	18.0	14.6	-0.29	0.1	0.56	121.8	67.3



**77 BCLR MISS AMBITION E728**

	IND	Ratio
Doc.	1	
BW	89	101
205	717	103
YW	942	94

ASA#: 3322953 Breed: 3/4 SM 1/4 AR DOB: 2/24/17

HOOK'S XPECTATION 36X  
CDI AMBITION 255C  
HSF RED FORTUNES SIS 33

OHRD DAKOTA COPPER 29K  
BCLR MISS COPPER Y113  
BCLR MISS UNITY U801

	CE	BW	WW	YW	ADG	MCE	Milk	MWW	Stay	Doc	YG	Marb	REA	API	TI
EPDs:	4.6	3	81.9	123.3	0.26	2.8	32	72.9	19.5	13	-0.21	0.1	0.67	115.9	71.7
Rank:	99	95	4	10	20	95	2	1	10	30	60	85	45	70	40

This heifer is really hard to part with. She is out of our potent Y113 cow who always gets it done. E728 has been a favorite among the heifers since she was born and I am anxious to see what she will do in her new home. AI'd 5/15/18 to KS Little John C85. Pasture Exposed to ES EB40 from 5/20/18-8/20/18. Ultrasound safe to ES EB40 and due 4/2/19 with a bull.

CE	BW	WW	YW	ADG	MCE	Milk	MWW	Stay	Doc	YG	Marb	REA	API	TI
9.1	0.9	79.2	119.0	0.3	4.3	25.3	64.8	18.1	15.0	-0.2	0.15	0.54	117.6	71.7

**78 BCLR MISS AMBITION E741**

	IND	Ratio
Doc.	1	
BW	89	101
205	652	94
YW	957	96

ASA#: 3322920 Breed: 3/4 SM 1/4 AR DOB: 3/4/17  
Homozygous Polled

HOOK'S XPECTATION 36X  
CDI AMBITION 255C  
HSF RED FORTUNES SIS 33

KS SATURN U390  
BCLR MISS SATURN  
21

	CE	BW	WW	YW	ADG	MCE	Milk	MWW	Stay	Doc	YG	Marb	REA	API	TI
EPDs:	1.8	4.7	80.4	122.2	0.26	2.3	28.2	68.4	19.7	12.8	-0.22	0.11	0.29	109.8	68.1
Rank:	99	99	5	10	20	99	10	2	10	30	55	85	99	80	60

The most moderate framed Ambition in our offering, but I still expect her to be a high performance brood cow. AI'd 5/15/18 to KS Little John C85. Pasture Exposed to ES EB40 from 5/20/18-8/20/18. Ultrasound safe to Little John and due 2/22/19 with a heifer.

CE	BW	WW	YW	ADG	MCE	Milk	MWW	Stay	Doc	YG	Marb	REA	API	TI
9.5	1.1	69.8	106.4	0.2	6.7	31.7	66.5	18.3	14.7	-0.26	0.07	0.34	110.5	64.9







## 79 BCLR MISS RED EYE E763

ASA#: 3322945 Breed: 1/2 SM 1/2 AR DOB: 4/8/17  
Homozygous Polled

	IND	Ratio
Doc.	1	
BW	89	101
205	734	106
YW	1058	106

DCR MR MOON SHINE X102

TNT RED EYE A212

TNT MISS Y32

MESSMER JUDGE 36N

LELAND JULIA 7071T

LELAND GRAND CANYON 3200

	CE	BW	WW	YW	ADG	MCE	Milk	MWW	Stay	Doc	YG	Marb	REA	API	TI
EPDs:	12.2	1.3	68.1	106.4	0.24	8	17.8	51.8	9.4	18.7	-0.19	0.03	0.46	99.9	63.8
Rank:	45	70	40	35	35	25	85	65	95	1	65	95	85	95	75

E763 is a dark red 1/2 blood out of a cow that is coming 12 and due up early again. Longevity is bred in here. AI'd 5/15/18 to KS Little John C85. Pasture Exposed to ES EB40 from 5/20/18-8/20/18. Ultrasound safe to ES EB40 and due 4/13/19.

CE	BW	WW	YW	ADG	MCE	Milk	MWW	Stay	Doc	YG	Marb	REA	API	TI
12.9	0.1	72.3	110.6	0.2	6.9	18.2	54.3	13.1	17.9	-0.19	0.11	0.44	109.4	67.5

## 80 BCLR MISS DRIVEN E768

ASA#: 3322937 Breed: 1/2 SM 1/2 AR DOB: 4/21/17  
Homozygous Polled

	IND	Ratio
Doc.	1	
BW	83	103
205	660	95
YW	1045	104

BIEBER HARD DRIVE Y120

BIEBER DRIVEN B105

BIEBER DURHEIM 293Z

BCLR SHAMWOW W611

BCLR MISS SHAMWOW C518

CDI MS CROCKET 88T

	CE	BW	WW	YW	ADG	MCE	Milk	MWW	Stay	Doc	YG	Marb	REA	API	TI
EPDs:	15.2	-1	71	110.8	0.25	7.2	27.4	62.9	17.7	16.2	-0.19	0.32	0.75	141.8	77.1
Rank:	15	20	30	25	25	35	10	10	25	4	65	45	30	15	20

Look at her set of EPDs! This heifer is an absolute doll and its hard to see her go. She goes back to our 88T donor and with Driven as her sire, she is sure to be a good one. AI'd 5/15/18 to IR Imperial D948. Pasture Exposed to ES EB40 from 5/20/18-8/20/18. Ultrasound safe to Imperial and due 2/22/19 with a bull.

CE	BW	WW	YW	ADG	MCE	Milk	MWW	Stay	Doc	YG	Marb	REA	API	TI
17.1	-0.8	71.1	108.4	0.2	9.5	27.9	63.4	19.4	14.2	-0.29	0.45	0.74	147.8	78.3

## 81 BCLR MISS DRIVEN E754

ASA#: 3322864 Breed: 3/8 SM 5/8 AR DOB: 3/16/17  
Heterozygous Polled

	IND	Ratio
Doc.	1	
BW	72	114
205	664	96
YW	1013	101

BIEBER HARD DRIVE Y120

BIEBER DRIVEN B105

BIEBER DURHEIM 293Z

TNT RED EYE A212

BCLR MISS RED EYE C550

BCLR MISS COPPER Y113

	CE	BW	WW	YW	ADG	MCE	Milk	MWW	Stay	Doc	YG	Marb	REA	API	TI
EPDs:	15.3	-2.2	65.5	105.8	0.25	8.8	27.1	59.8	15.8	18	-0.12	0.12	0.48	120.6	67.7
Rank:	15	10	50	35	25	15	15	20	50	2	85	85	80	60	60

Another descendant of our Y113 cow. This heifer is really easy keeping and is forming a typical beautiful Driven udder. AI'd 5/15/18 to IR Imperial D948. Pasture Exposed to ES EB40 from 5/20/18-8/20/18. Ultrasound safe to Imperial and due 2/22/19 with a heifer.

CE	BW	WW	YW	ADG	MCE	Milk	MWW	Stay	Doc	YG	Marb	REA	API	TI
17.2	-1.4	68.4	105.9	0.2	10.3	27.8	61.9	18.5	15.1	-0.25	0.35	0.61	140.5	74.8

# DVAuction

Broadcasting Real-Time Auctions

Never Miss An Auction Again!  
Watch & Bid online for FREE!

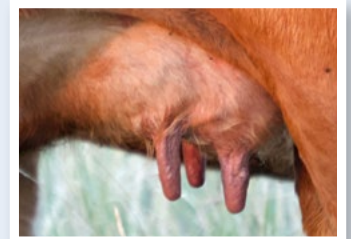
Visit [www.DVAuction.com](http://www.DVAuction.com)  
and Register Today!

For General Questions Please Contact Our Office:  
(402) 316-5460 or support@dvauction.com



**BICHLER**  
SIMMENTALS & RED ANGUS





Udder of Lot 82's Dam.

**82 BCLR MISS DEEP RED E757**

	IND	Ratio
Doc.	1	
BW	78	101
205	660	96
YW	1060	101

ARA#: 3786683 Breed: PB 1A AR DOB: 3/19/17

**BIEBER ROLLIN DEEP Y118**  
**RREDS ROLLING DEEP C734**  
**BROWN MS CONQUEST Z2703**

**LCC NEW CHAPTER A705L**  
**MISS BHR CHAPTER ONE 5276 CL**  
**BHR LOGAN 9285 CL**

	CE	BW	WW	YW	ADG	CEM	Milk	MWW	Stay	Doc	YG	Marb	REA	HB	GM
EPDs:	9	0.4	62	98	0.23	26	5	*	23	*	0.14	0.57	0	216	49
Rank:	92	85	28	30	35	23	91	*	1	*	71	11	38	3	26

E757 is definitely a favorite of our Red Angus breeds. Her dam was purchased at the ND Red Select sale from Pederson's BHR. She is bred up early and is developing a nice udder. Category 1A AI' to PIE Husker 5500 on 5/15/18. Pasture exposed to ES EB40 from 5/20/18-8/15/18. Ultrasound safe to AI with a bull and due 2/22/19.

CE	BW	WW	YW	ADG	CEM	Milk	MWW	Stay	Doc	YG	Marb	REA	HB	GM
11	-1.1	66	108	0.26	7	25	*	21	*	0.16	0.52	0.04	213	50



**83 BCLR MISS WIDE LOAD E720**

	IND	Ratio
Doc.	1	
BW	83	100
205	661	95
YW	854	85

ASA#: 3322939 Breed: PB SM DOB: 2/22/17

**CCR WIDE RANGE 9005A**  
**BCLR WIDE LOAD C21-3**  
**WS MOTHER LODE W21**

**HOOKS SHEAR FORCE 38K**  
**BCLR MISS FORCE C543**  
**KS MISS DENSITY A482**

	CE	BW	WW	YW	ADG	MCE	Milk	MWW	Stay	Doc	YG	Marb	REA	API	TI
EPDs:	11.5	1.2	74.3	111.2	0.23	6.4	25.7	62.8	18.1	16	-0.46	0.17	1.15	138.7	77.6
Rank:	30	40	25	25	35	30	20	15	40	3	55	20	3	15	15

One of the first Wide Loads to calve and she has a great cow family to back her up. She traces all the way to the KS Kayla donor who has made a huge impact at Kenner Simmentals. AI'd on 5/15/18 to WS Proclamation E202. Pasture Exposed to KS Home Run B23 from 5/20/18-6/20/18 then to ES EB40 from 6/20/18-8/20/18. Ultrasound safe to ES EB40 and due 4/2/19 with a bull.

CE	BW	WW	YW	ADG	MCE	Milk	MWW	Stay	Doc	YG	Marb	REA	API	TI
12.6	0.0	75.4	113.0	0.2	6.1	22.1	59.8	17.4	16.5	-0.32	0.18	0.78	123.1	72.1

**84 BCLR MISS CASH FLOW E727**

	IND	Ratio
Doc.	1	
BW	69	124
205	647	93
YW	1053	105

ASA#: 3322904 Breed: PB SM DOB: 2/24/17  
 Homozygous Polled Heterozygous Black

**CCR WIDE RANGE 9005A**  
**BCLR CASH FLOW C820**  
**BCLR MISS MONICA U820**

**THSF FREEDOM 300N**  
**MJ LOOK AT ME**  
**MJ MISS T704**

	CE	BW	WW	YW	ADG	MCE	Milk	MWW	Stay	Doc	YG	Marb	REA	API	TI
EPDs:	17.9	-1.3	73.9	112.5	0.24	10	21.1	58	19.9	18.9	-0.48	0.03	1.17	147.8	77.5
Rank:	1	4	25	25	25	2	60	35	15	1	45	50	3	5	15

Cash Flow does it again! If I could make them all like this, I would. Big bodied, easy keeping, and forming a perfect udder. Doesn't get much better! AI'd 5/15/18 to IR Imperial D948. Pasture Exposed to KS Home Run B23 from 5/20/18-6/20/18 then to ES EB40 from 6/20/18-8/20/18. Ultrasound safe to Imperial and due 2/22/19 with a bull.

CE	BW	WW	YW	ADG	MCE	Milk	MWW	Stay	Doc	YG	Marb	REA	API	TI
18.5	-1.0	72.6	109.2	0.2	10.9	24.8	61.0	20.5	15.5	-0.43	0.31	0.95	145.5	76.3





# 85 BCLR MISS RED EYE C3 E762

	IND	Ratio
Doc.	1	
BW	90	99
205	739	107
YW	1112	111

ASA#: 3322889 Breed: PB SM DOB: 4/1/17  
Homozygous Polled Heterozygous Black

**DCR MR MOON SHINE X102**  
**TNT RED EYE A212**  
**TNT MISS Y32**

**SRF P RED COAT 819U**  
**BCLR MISS RC Y117**  
**BCLR MISS REGAN R513**

	CE	BW	WW	YW	ADG	MCE	Milk	MWW	Stay	Doc	YG	Marb	REA	API	TI
EPDs:	6.9	4.5	75.6	115.1	0.25	5.8	19	56.7	16.2	14.6	-0.42	0.1	0.8	119.6	71
Rank:	90	99	20	20	40	40	45	70	10	75	30	60	65	40	

Long bodied granddaughter of our Regan donor. Her full brother sells as lot 12 AI'd on 5/15/18 to KS Home Run B23. Pasture Exposed to KS Home Run B23 from 5/20/18-6/20/18 then to ES EB40 from 6/20/18-8/20/18. Ultrasound safe to Home Run and due 3/21/19 with a heifer.

	CE	BW	WW	YW	ADG	MCE	Milk	MWW	Stay	Doc	YG	Marb	REA	API	TI
	12.7	0.8	71.9	112.9	0.3	8.6	21.0	56.9	16.6	14.9	-0.31	0.2	0.85	120.8	69.7

# 86 BCLR MISS BOUNTY E737

	IND	Ratio
Doc.	1	
BW	83	108
205	605	87
YW	887	89

ASA#: 3322869 Breed: PB SM DOB: 3/1/17  
Homozygous Polled Heterozygous Black

**MCM TOP GRADE 018X**  
**HOOK'S BOUNTY 6B**  
**HOOK'S YUMA 49Y**

**MR NLC SUPERIOR S6018**  
**BCLR MISS SPICE X028**  
**TNT MISS HONEY L9**

	CE	BW	WW	YW	ADG	MCE	Milk	MWW	Stay	Doc	YG	Marb	REA	API	TI
EPDs:	8.4	1	59.5	90.7	0.2	5.5	29.1	58.8	21.9	14.1	-0.53	-0.01	1.07	127.5	64.7
Rank:	75	35	90	80	60	50	4	30	2	10	20	60	10	40	80

A granddaughter of the L9 donor. Her maternal sister sells as lot 110. AI'd on 5/15/18 to KS Home Run B23. Pasture Exposed to KS Home Run B23 from 5/20/18-6/20/18 then to ES EB40 from 6/20/18-8/20/18. Ultrasound safe to Home Run and due 2/22/19 with a bull.

	CE	BW	WW	YW	ADG	MCE	Milk	MWW	Stay	Doc	YG	Marb	REA	API	TI
	13.4	-1.0	63.9	100.7	0.2	8.4	26.1	57.9	19.4	14.7	-0.37	0.14	0.98	124.4	66.3

# 88 BCLR MISS FRNTR C3 E759

	IND	Ratio
Doc.	1	
BW	94	95
205	762	110
YW	945	94

ASA#: 3322898 Breed: PB SM DOB: 3/20/17  
Homozygous Black

**CCR FRONTIER 0053Z**  
**SYS FRONTIER C3**  
**SYS MISS GRADE A A42**

**CDI AUTHORITY 77X**  
**BCLR MISS AUTHORITY Z226**  
**BCLR MISS ZIGGY W915**

	CE	BW	WW	YW	ADG	MCE	Milk	MWW	Stay	Doc	YG	Marb	REA	API	TI
EPDs:	9.4	2.8	73	110	0.23	3.7	27.2	63.6	20.2	12.2	-0.56	-0.24	1.07	115	65
Rank:	60	80	30	30	35	80	10	10	15	30	10	99	10	80	75

Big footed C3 daughter out of an attractive, black Authority daughter. AI'd on 5/15/18 to KS Home Run B23. Pasture Exposed to KS Home Run B23 from 5/20/18-6/20/18 then to ES EB40 from 6/20/18-8/20/18. Ultrasound safe to Home Run and due 2/22/19 with a heifer.

	CE	BW	WW	YW	ADG	MCE	Milk	MWW	Stay	Doc	YG	Marb	REA	API	TI
	13.9	-0.1	70.6	110.4	0.3	7.5	25.1	60.3	18.6	13.7	-0.38	0.03	0.98	118.4	66.6



# 87 BCLR MISS FRNTR C3 E751

	IND	Ratio
Doc.	1	
BW	97	92
205	662	95
YW	944	94

ASA#: 3322951 Breed: PB SM DOB: 3/12/17  
Homozygous Polled Heterozygous Black

**CCR FRONTIER 0053Z**  
**SYS FRONTIER C3**  
**SYS MISS GRADE A A42**

**RC CLUB KING 040R**  
**BCLR MISS CLUB KING Y105**  
**BCLR MISS TARYN T714**

	CE	BW	WW	YW	ADG	MCE	Milk	MWW	Stay	Doc	YG	Marb	REA	API	TI
EPDs:	10.2	2.1	65.4	98.4	0.21	5.2	27.4	60.1	23	13.2	-0.38	0	0.68	132	66.5
Rank:	50	60	65	60	50	55	10	25	1	15	90	60	85	30	65

The Y105 cow has always brought us good ones and we really like this daughter. E751 reminds us a lot of her dam and she would be on our short list of black breeds! AI'd on 5/15/18 to KS Home Run B23. Pasture Exposed to KS Home Run B23 from 5/20/18-6/20/18 then to ES EB40 from 6/20/18-8/20/18. Ultrasound safe to ES EB40 and due 4/20/19.

	CE	BW	WW	YW	ADG	MCE	Milk	MWW	Stay	Doc	YG	Marb	REA	API	TI
	11.9	0.5	71.0	106.6	0.2	5.5	23.0	58.4	19.9	15.1	-0.28	0.1	0.55	120	66.6

# 89 BCLR MISS FRONTIER E764

	IND	Ratio
Doc.	1	
BW	90	98
205	728	105
YW	1096	109

ASA#: 3322946 Breed: PB SM DOB: 4/6/17  
Homozygous Polled

**CCR FRONTIER 0053Z**  
**SYS FRONTIER C3**  
**SYS MISS GRADE A A42**

**BCLR LINTON Y513-2**  
**BCLR MISS LINTON A308**  
**BCLR MISS SUGAR X027**

	CE	BW	WW	YW	ADG	MCE	Milk	MWW	Stay	Doc	YG	Marb	REA	API	TI
EPDs:	7.9	2.9	65.1	96.7	0.2	4.3	28.8	61.3	17.5	14.5	-0.47	-0.14	0.88	109.1	62
Rank:	80	80	65	65	60	70	5	20	50	10	50	95	40	90	90

E764 combines two of our most influential donors, Regan and L9. In addition to her pedigree, we admire her rib shape and muscle expression. AI'd on 5/15/18 to KS Home Run B23. Pasture Exposed to KS Home Run B23 from 5/20/18-6/20/18 then to ES EB40 from 6/20/18-8/20/18. Ultrasound safe to Home Run and due 2/22/19 with a bull.

	CE	BW	WW	YW	ADG	MCE	Milk	MWW	Stay	Doc	YG	Marb	REA	API	TI
	13.2	0.0	66.7	103.7	0.2	7.8	25.9	59.2	17.2	14.9	-0.34	0.08	0.89	115.4	65.1





90

**BCLR MISS FRNTR C3 E765**

ASA#: 3322856 Breed: PB SM DOB: 4/10/17  
Homozygous Polled

	IND	Ratio
Doc.	1	
BW	83	104
205	611	88
YW	942	94

**CCR FRONTIER 0053Z**

**SYS FRONTIER C3**

**SYS MISS GRADE A A42**

**BCLR LINTON Y513-2**

**BCLR LINTON B426**

**TNT MISS HONEY L9**

	CE	BW	WW	YW	ADG	MCE	Milk	MWW	Stay	Doc	YG	Marb	REA	API	TI
EPDs:	10.4	1.4	55	79.7	0.15	6.1	29.9	57.3	21.7	17.4	-0.43	-0.01	0.58	125.8	61.1
Rank:	45	45	99	95	95	35	3	40	3	1	70	60	99	45	95

E765 is closely related to the lot 89 heifer and again combines Regan and L9. There is so much maternal potential in these heifers! AI'd on 5/15/18 to KS Home Run B23. Pasture Exposed to KS Home Run B23 from 5/20/18-6/20/18 then to ES EB40 from 6/20/18-8/20/18. Ultrasound safe to Home Run and due 2/22/19 with a bull.

CE	BW	WW	YW	ADG	MCE	Milk	MWW	Stay	Doc	YG	Marb	REA	API	TI
14.4	-0.8	61.6	95.2	0.2	8.7	26.5	57.2	19.3	16.3	-0.32	0.14	0.74	123.5	64.5



**LOT 91**

91

**BCLR MISS FRONTIER E716**

ASA#: 3322877 Breed: 3/4 SM 1/4 AN DOB: 2/21/17  
Homozygous Black

	IND	Ratio
Doc.	1	
BW	77	107
205	688	99
YW	996	99

**MCC DAYLITE 0005**

**CCR FRONTIER 0053Z**

**CCR MS 4013 DURA 0053X**

**CCR WIDE RANGE 9005A**

**BCLR MISS WIDE RNGE C541**

**PSR MISS FORCE W905**

	CE	BW	WW	YW	ADG	MCE	Milk	MWW	Stay	Doc	YG	Marb	REA	API	TI
EPDs:	12.1	0.2	70.7	104.6	0.21	6.4	25.5	60.8	15.5	17.7	-0.39	0.14	1	121.3	70.8
Rank:	50	45	30	40	55	50	20	20	50	2	15	80	4	60	45

Soggy, moderate, brood cow in the making is our best description for E716. She has been a looker since she was a baby. AI'd on 5/15/18 to KS Home Run B23. Pasture Exposed to KS Home Run B23 from 5/20/18-6/20/18 then to ES EB40 from 6/20/18-8/20/18. Ultrasound safe to Home Run and due 2/22/19 with a heifer.

CE	BW	WW	YW	ADG	MCE	Milk	MWW	Stay	Doc	YG	Marb	REA	API	TI
15.3	-1.4	69.5	107.7	0.2	8.9	24.3	58.9	16.2	16.5	-0.3	0.22	0.95	127.1	71.8



**LOT 92**

92

**BCLR MISS FRONTIER E724**

ASA#: 3322848 Breed: 3/4 SM 1/4 AN DOB: 2/24/17  
Homozygous Black

	IND	Ratio
Doc.	1	
BW	93	92
205	704	102
YW	979	98

**MCC DAYLITE 0005**

**CCR FRONTIER 0053Z**

**CCR MS 4013 DURA 0053X**

**BCLR LINTON Y513-2**

**BCLR MISS LINTON B424**

**S037**

	CE	BW	WW	YW	ADG	MCE	Milk	MWW	Stay	Doc	YG	Marb	REA	API	TI
EPDs:	9.6	1.3	63.7	96	0.2	4.6	35.1	66.9	12.7	17.1	-0.34	-0.03	0.64	98.1	61.3
Rank:	80	70	55	60	65	80	1	4	80	2	25	99	50	95	85

E724 is an attractive CCR Frontier daughter who goes back to our S037 cow "Daisy." Cows in this family are big bodied and always bring in a good calf. AI'd on 5/15/18 to KS Home Run B23. Pasture Exposed to KS Home Run B23 from 5/20/18-6/20/18 then to ES EB40 from 6/20/18-8/20/18. Ultrasound safe to Home Run and due 3/19/19 with a heifer.

CE	BW	WW	YW	ADG	MCE	Milk	MWW	Stay	Doc	YG	Marb	REA	API	TI
14.0	-0.8	66.0	103.4	0.2	8.0	29.1	62.0	14.8	16.2	-0.27	0.13	0.77	115.3	67

93

**BCLR MISS FRONTIER E725**

ASA#: 3322859 Breed: 3/4 SM 1/4 AN DOB: 2/24/17  
Homozygous Polled

	IND	Ratio
Doc.	1	
BW	90	100
205	669	96
YW	913	91

**MCC DAYLITE 0005**

**CCR FRONTIER 0053Z**

**CCR MS 4013 DURA 0053X**

**PVF-BF BF26 BLACK JOKER**

**BCLR MISS JOKER Y104**

**BCLR MISS RAYCH U819**

	CE	BW	WW	YW	ADG	MCE	Milk	MWW	Stay	Doc	YG	Marb	REA	API	TI
EPDs:	10.1	1.5	61.7	92.6	0.19	3.3	36.4	67.1	17.7	12.2	-0.41	-0.06	1.02	106.4	59.7
Rank:	75	75	65	65	70	95	1	3	25	40	10	99	3	85	90

E725 is a maternal sister to lot 45. Predictable, proven cow families are splashed all over her pedigree. AI'd on 5/15/18 to KS Home Run B23. Pasture Exposed to KS Home Run B23 from 5/20/18-6/20/18 then to ES EB40 from 6/20/18-8/20/18. Ultrasound safe to Home Run and due 2/22/19 with a bull.

CE	BW	WW	YW	ADG	MCE	Milk	MWW	Stay	Doc	YG	Marb	REA	API	TI
14.3	-0.7	65.0	101.7	0.2	7.3	29.7	62.1	17.3	13.7	-0.31	0.12	0.96	119.7	66.3







## 94 BCLR MISS SANTA FE E740

ASA#: 3322963 Breed: 3/4 SM 1/4 AN DOB: 3/4/17  
Homozygous Polled Homozygous Black

	IND	Ratio
Doc.	1	
BW	69	116
205	676	98
YW	940	94

S D S GRADUATE 006X

CCR SANTA FE 9349Z

CCR MS APPLE 9332W

TNT AXIS X307

WINC MISS 560C

HSF PLAYMATE W917

	CE	BW	WW	YW	ADG	MCE	Milk	MWW	Stay	Doc	YG	Marb	REA	API	TI
EPDs:	12.2	0.6	73.7	102.7	0.18	8	16.8	53.5	12.8	13.1	-0.3	-0.03	0.9	116.5	70.9
Rank:	45	55	20	45	75	25	90	60	75	25	35	99	10	70	45

One of the most attractive breeds of the offering. This Santa Fe is sure to be a head turner for her new owners. She looks to have a great udder too. AI'd on 5/15/18 to WS Proclamation E202. Pasture Exposed to KS Home Run B23 from 5/20/18-6/20/18 then to ES EB40 from 6/20/18-8/20/18. Ultrasound safe to Home Run and due 3/19/19 with a heifer.

CE	BW	WW	YW	ADG	MCE	Milk	MWW	Stay	Doc	YG	Marb	REA	API	TI
15.3	-1.2	71.0	106.7	0.2	9.7	19.9	55.3	14.9	14.2	-0.25	0.13	0.9	118.8	69.3

## 95 BCLR MISS AUGUSTUS E750

ASA#: 3323012 Breed: 3/4 SM 1/4 AN DOB: 3/12/17  
Homozygous Polled

	IND	Ratio
Doc.	1	
BW	72	113
205	614	89
YW	941	94

RCR AUGUSTUS R54

ASR AUGUSTUS Z2165

ASR MS JORDAN W916

CCR WIDE RANGE 9005A

HSR MS WIDE RANGE C604

HSR MS TOP GRADE A160

	CE	BW	WW	YW	ADG	MCE	Milk	MWW	Stay	Doc	YG	Marb	REA	API	TI
EPDs:	16.8	-1.4	58.1	88.8	0.19	8.8	20.9	49.9	18.6	14.6	-0.56	0.09	1.05	141.5	69.8
Rank:	10	15	75	75	70	15	60	75	15	15	1	90	2	15	50

An easy keeping, moderate framed Augustus daughter who is a carbon copy of her dam. Maternal sister to lot 66. AI'd on 5/15/18 to KS Home Run B23. Pasture Exposed to KS Home Run B23 from 5/20/18-6/20/18 then to ES EB40 from 6/20/18-8/20/18. Ultrasound safe to Home Run and due 2/22/19 with a bull.

CE	BW	WW	YW	ADG	MCE	Milk	MWW	Stay	Doc	YG	Marb	REA	API	TI
17.6	-2.2	63.2	99.8	0.2	10.1	22.0	53.5	17.8	14.9	-0.38	0.19	0.97	131.3	68.8





## 96 BCLR MISS PGRID D689

ASA#: 3307209 Breed: 3/4 SM 1/4 AN DOB: 9/25/16  
Homozygous Polled Heterozygous Black

	IND	Ratio
Doc.	1	
BW	80	103
205	461	Fall
YW	711	Fall

S A V NET WORTH 4200

TJ POWER GRID 363Y  
TJ 15T

WS BEEF KING W107  
HOOK'S YANKEE 38Y  
HOOK'S ULTIMATUM 36U

	CE	BW	WW	YW	ADG	MCE	Milk	MWW	Stay	Doc	YG	Marb	REA	API	TI
EPDs:	8.5	2.3	74.3	114.9	0.25	6.4	24.1	61.2	20.4	9.5	-0.28	0.15	0.85	124.6	69.6
Rank:	90	90	20	20	25	50	30	15	4	75	40	80	15	50	50

Direct daughter of our Yankee donor. The Power Grids are quickly turning into herdbull making cows with snug udders. AI'd on 5/15/18 to WS Proclamation E202. Pasture Exposed to KS Home Run B23 from 5/20/18-6/20/18 then to ES EB40 from 6/20/18-8/20/18. Ultrasound safe to Home Run and due 3/16/19 with a heifer.

CE	BW	WW	YW	ADG	MCE	Milk	MWW	Stay	Doc	YG	Marb	REA	API	TI
13.5	-0.3	71.3	112.8	0.3	8.9	23.6	59.1	18.7	12.4	-0.24	0.22	0.87	128.6	71.2

## 97 BCLR MISS DRIVEN E749

ASA#: 3322899 Breed: 1/2 SM 1/2 AR DOB: 3/8/17  
Homozygous Polled

	IND	Ratio
Doc.	1	
BW	66	120
205	704	102
YW	990	99

BIEBER HARD DRIVE Y120  
BIEBER DRIVEN B105  
BIEBER DURHEIM 293Z

CDI VEGAS 26X  
BCLR MISS VEGAS C531  
BCLR MISS STEELE A328

	CE	BW	WW	YW	ADG	MCE	Milk	MWW	Stay	Doc	YG	Marb	REA	API	TI
EPDs:	19.2	-3.3	60.6	93.4	0.21	11	28.1	58.3	17.3	6.6	-0.34	0.1	0.84	134.6	69.1
Rank:	2	4	70	65	55	3	10	30	30	95	25	85	15	30	55

This heifer is a favorite of those who sort our sale offering. She is attractively made with maternal greats like Driven and Vegas. Hard to fault this heifer. AI'd on 5/15/18 to KS Home Run B23. Pasture Exposed to KS Home Run B23 from 5/20/18-6/20/18 then to ES EB40 from 6/20/18-8/20/18. Ultrasound safe to Home Run and due 3/14/19 with a heifer.

CE	BW	WW	YW	ADG	MCE	Milk	MWW	Stay	Doc	YG	Marb	REA	API	TI
18.8	-3.1	64.4	102.1	0.2	11.2	25.6	57.7	17.1	10.9	-0.27	0.2	0.87	133.8	70.9





*Pick from females like these & many more.*

## **98** **FLUSH OPPORTUNITY**

In keeping up with the theme of making this offering truly special, we decided to offer an IVF flush on any cow in our herd. Two years ago we offered this opportunity at the North Star Classic and the resulting offspring are now features in the Kenner Simmentals production sale and standouts in their replacement pen. This is your chance to take advantage of the many proven donor cow families we have or tap into a new outcross female that we haven't flushed yet. We will guarantee 6 embryos with an open top. Bichler Simmentals & Red Angus will be responsible for administering shots and hauling the donor to the flushing facility. Flush will be performed in the spring of 2019.



**KS HANNAH Y337**



**BCLR MISS AUTHORITY A301**



**BCLR MISS TESSA Z219**



**KS ZADA Z887**



**BCLR MISS AUTHORITY Z214**







## HOOK'S YANKEE 38Y

### 99 SELLING 3 IVF EMBRYOS

Breed: PB SM Homozygous Polled

IPU RED WESTERN 49X  
KWA FLYF RED MOUNTAIN 16Z  
KWA MS ROCK 14X

WS BEEF KING W106  
HOOK'S YANKEE 38Y  
HOOK'S ULTIMATUM 36U

	CE	BW	WW	YW	ADG	MCE	Milk	MWW	Stay	Doc	YG	Marb	REA	API	TI
EPDs:	9.2	1.2	68.4	103.3	0.22	4.5	31.3	65.5	17.7	9.4	-0.42	0.27	0.89	137.6	76.3
Rank:	65	40	50	45	40	65	2	10	50	70	75	10	35	20	15

Offering 3 embryos and guaranteeing 1 pregnancy if done by a certified embryologist.

### 99A-F CHOICE OF THE YANKEE DAUGHTERS BY CDI AMBITION

Breed: PB SM Homozygous Polled

We're offering a pick of Yankee heifer calves by CDI Ambition! This litter of Ambitions out of our Yankee donor – featured on the next two pages – are some of the most phenotypically intriguing heifers we've produced! They are so consistently massive ribbed, stout, big footed and attractive. Yankee has quickly proven her worth in our program. We've utilized her first son in our AI and ET program and we are excited to get these daughters into production! The first Ambition daughters are looking to make some beautiful brood cows with super udders. Good luck narrowing your selection to just one!



Paul Bichler putting in lot tags.







## 99A BCLR MISS YANKEE F811

ASA#: 3480700 Breed: PB SM DOB: 2/22/18  
Homozygous Polled

	IND	Ratio
Doc.	1	
BW	87	TW
205	676	TW
YW	1154	TW

HOOK'S XPECTATION 36X  
CDI AMBITION 255C  
HSF RED FORTUNES SIS 33

WS BEEF KING W107  
HOOK'S YANKEE 38Y  
HOOK'S ULTIMATUM 36U

	CE	BW	WW	YW	ADG	MCE	Milk	MWW	Stay	Doc	YG	Marb	REA	API	TI
EPDs:	1.8	4.5	82	119.2	0.23	-0.3	29.4	70.3	19.4	10.2	-0.43	0.2	0.88	126.8	77.2
Rank:	99	99	10	15	35	99	4	1	20	60	70	15	40	45	15

LOT 99A



## 99B BCLR MISS YANKEE F812

ASA#: 3480701 Breed: PB SM DOB: 2/22/18  
Homozygous Polled

	IND	Ratio
Doc.	2	
BW	75	TW
205	624	TW
YW	1072	TW

HOOK'S XPECTATION 36X  
CDI AMBITION 255C  
HSF RED FORTUNES SIS 33

WS BEEF KING W107  
HOOK'S YANKEE 38Y  
HOOK'S ULTIMATUM 36U

	CE	BW	WW	YW	ADG	MCE	Milk	MWW	Stay	Doc	YG	Marb	REA	API	TI
EPDs:	1.8	4.5	82	119.2	0.23	-0.3	29.4	70.3	19.4	10.2	-0.43	0.2	0.88	126.8	77.2
Rank:	99	99	10	15	35	99	4	1	20	60	70	15	40	45	15

LOT 99B



## 99C BCLR MISS YANKEE F868

ASA#: 3480755 Breed: PB SM DOB: 3/25/18  
Homozygous Polled

	IND	Ratio
Doc.	1	
BW	112	ET
205	767	ET
YW	1175	ET

HOOK'S XPECTATION 36X  
CDI AMBITION 255C  
HSF RED FORTUNES SIS 33

WS BEEF KING W107  
HOOK'S YANKEE 38Y  
HOOK'S ULTIMATUM 36U

	CE	BW	WW	YW	ADG	MCE	Milk	MWW	Stay	Doc	YG	Marb	REA	API	TI
EPDs:	1.5	4.5	82.6	118.7	0.23	-0.3	23.8	65.1	19.6	11	-0.43	0.2	0.88	126.8	76.8
Rank:	99	99	5	15	35	99	30	10	20	45	70	15	40	45	15

LOT 99C





# 99D BCLR MISS YANKEE F869

ASA#: 3480757 Breed: PB SM DOB: 3/26/18  
Homozygous Polled

	IND	Ratio
Doc.	1	
BW	113	ET
205	799	ET
YW	1207	ET

HOOK'S XPECTATION 36X  
CDI AMBITION 255C  
HSF RED FORTUNES SIS 33

WS BEEF KING W107  
HOOK'S YANKEE 38Y

HOOK'S ULTIMATUM 36U

	CE	BW	WW	YW	ADG	MCE	Milk	MWW	Stay	Doc	YG	Marb	REA	API	TI
EPDs:	1.5	4.7	84.8	121.8	0.23	-0.3	23.3	65.6	19.6	11	-0.43	0.2	0.88	127.3	77.8
Rank:	99	99	3	10	35	99	35	10	20	45	70	15	40	40	10



# 99E BCLR MISS YANKEE F870

ASA#: 3480759 Breed: PB SM DOB: 3/26/18  
Homozygous Polled

	IND	Ratio
Doc.	1	
BW	93	ET
205	788	ET
YW	1006	ET

HOOK'S XPECTATION 36X  
CDI AMBITION 255C  
HSF RED FORTUNES SIS 33

WS BEEF KING W107  
HOOK'S YANKEE 38Y

HOOK'S ULTIMATUM 36U

	CE	BW	WW	YW	ADG	MCE	Milk	MWW	Stay	Doc	YG	Marb	REA	API	TI
EPDs:	1.5	4.7	84.1	120.9	0.23	-0.3	23.5	65.5	19.6	11	-0.43	0.2	0.88	127.1	77.5
Rank:	99	99	4	10	35	99	35	10	20	45	70	15	40	40	15



# 99F BCLR MISS YANKEE F871

ASA#: 3480760 Breed: PB SM DOB: 3/28/18  
Homozygous Polled

	IND	Ratio
Doc.	1	
BW	90	ET
205	678	ET
YW	1116	ET

HOOK'S XPECTATION 36X  
CDI AMBITION 255C  
HSF RED FORTUNES SIS 33

WS BEEF KING W107  
HOOK'S YANKEE 38Y

HOOK'S ULTIMATUM 36U

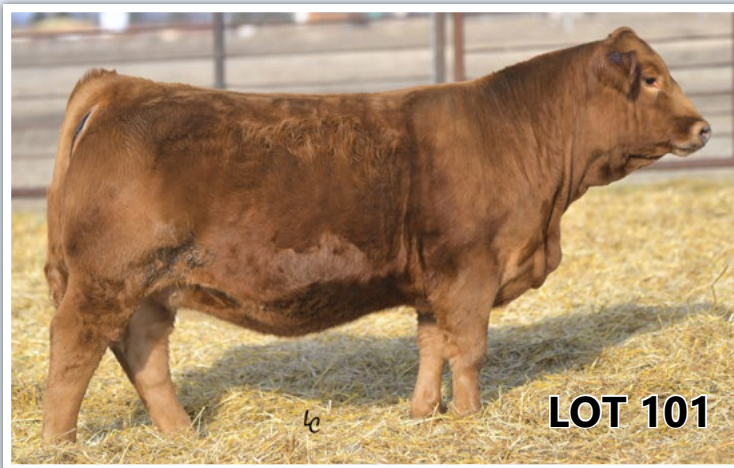
	CE	BW	WW	YW	ADG	MCE	Milk	MWW	Stay	Doc	YG	Marb	REA	API	TI
EPDs:	3.4	4.1	77.8	112.8	0.22	0.8	31	69.9	19	6.7	-0.42	0.19	0.9	126.3	75.2
Rank:	99	95	15	25	40	99	2	2	30	95	75	15	35	45	20







**LOT 100**



**LOT 101**

**100 BCLR MISS AMBITION F827**

ASA#: 3480717 Breed: PB SM DOB: 2/27/18  
Homozygous Polled

	IND	Ratio
Doc.	1	
BW	86	99
205	675	101
YW	1154	106

**HOOK'S XPECTATION 36X**  
**CDI AMBITION 255C**  
**HSF RED FORTUNES SIS 33**

**WS BEEF MAKER R13**  
**BCLR MISS MAKER Z235**  
**TNT MISS HONEY L9**

	CE	BW	WW	YW	ADG	MCE	Milk	MWW	Stay	Doc	YG	Marb	REA	API	TI
EPDs:	5.1	3.2	73.9	103	0.18	2.5	30.1	67	18.4	15.9	-0.45	0.17	0.8	125.5	73.5
Rank:	99	85	25	45	80	95	3	4	35	3	60	20	60	45	25

This long spined, heavy muscled Ambition is typical of the females he produces. F827 is a granddaughter of our L9 donor who you always like to see in a pedigree!

**101 BCLR MISS AMBITION F842**

ASA#: 3480732 Breed: PB SM DOB: 3/8/18  
Homozygous Polled

	IND	Ratio
Doc.	1	
BW	70	119
205	652	97
YW	1139	105

**HOOK'S XPECTATION 36X**  
**CDI AMBITION 255C**  
**HSF RED FORTUNES SIS 33**

**LBR CROCKETT R81**  
**BCLR MISS WENDI W917**  
**BCLR MISS SABRINA S604**

	CE	BW	WW	YW	ADG	MCE	Milk	MWW	Stay	Doc	YG	Marb	REA	API	TI
EPDs:	5.6	2.3	72.4	105.7	0.21	2.5	30.8	66.9	19.6	15	-0.36	0.14	0.71	128.7	73.2
Rank:	95	70	30	40	50	95	2	4	20	5	95	20	80	40	30

F842 is yet another descendant of the 1413 cow family. Her dam is a powerful Crockett daughter and this heifer is sure to look just like her. Her full sister sells as lot 72.

**102 BCLR MISS AMBITION F849**

ASA#: 3480739 Breed: PB SM DOB: 3/11/18  
Homozygous Polled

	IND	Ratio
Doc.	1	
BW	110	71
205	717	107
YW	1156	106

**HOOK'S XPECTATION 36X**  
**CDI AMBITION 255C**  
**HSF RED FORTUNES SIS 33**

**KR MR SHEAR FORCE W17**  
**BCLR MISS FORCE Z223**  
**BCLR MISS WINIFRED W922**

	CE	BW	WW	YW	ADG	MCE	Milk	MWW	Stay	Doc	YG	Marb	REA	API	TI
EPDs:	0.8	6	81.2	116.9	0.22	-0.7	21.4	61.9	19.2	11.8	-0.43	-0.02	0.85	109.6	68.2
Rank:	99	99	10	15	40	99	55	15	25	35	70	65	45	90	55

By now you know that udder quality is a big deal around here and F849's dam is among the best for udder quality. This heifer is larger framed and will make a powerful, beautiful uddered cow for her new owner. Full sister sells as lot 73.







## 103 BCLR MISS AMBITION F863

ASA#: 3480752 Breed: PB SM DOB: 3/16/18

	IND	Ratio
Doc.	2	
BW	85	97
205	654	97
YW	1095	101

HOOK'S XPECTATION 36X  
 CDI AMBITION 255C  
 HSF RED FORTUNES SIS 33

TNT RED EYE A212  
 BCLR MISS RED EYE C550  
 BCLR MISS COPPER Y113

	CE	BW	WW	YW	ADG	MCE	Milk	MWW	Stay	Doc	YG	Marb	REA	API	TI
EPDs:	4.7	3.2	76.1	113.6	0.23	2.6	25.6	63.6	18.1	16.6	-0.31	-0.02	0.68	115.8	69.5
Rank:	99	85	20	20	35	90	20	10	40	2	99	65	85	75	50

The Y113 cow has produced many sale toppers for us and the females in this cow family are all reliable and make great cows.

## 104 BCLR MISS RED EYE F854

ASA#: 3480743 Breed: PB SM DOB: 3/13/18

	IND	Ratio
Doc.	1	
BW	99	84
205	723	108
YW	1222	112

DCR MR MOON SHINE X102  
 TNT RED EYE A212  
 TNT MISS Y32

TNT TONNER N374  
 BCLR MISS TRISTA T715

SHOESTRING MICKS G159

	CE	BW	WW	YW	ADG	MCE	Milk	MWW	Stay	Doc	YG	Marb	REA	API	TI
EPDs:	5.9	5.4	75.3	113.6	0.24	4.5	18	55.5	13.1	12.6	-0.47	-0.09	0.77	100.2	65
Rank:	95	99	20	20	25	65	85	55	95	25	50	85	65	99	75

This heifer's 11 year old dam is a consistent Tonner daughter. Our youngest Tonners are 12 now and still in production!.

## 105 BCLR MISS RED EYE F855

ASA#: 3480744 Breed: PB SM DOB: 3/13/18  
 Homozygous Polled

	IND	Ratio
Doc.	1	
BW	105	77
205	729	109
YW	1119	103

DCR MR MOON SHINE X102  
 TNT RED EYE A212  
 TNT MISS Y32

ANKONIAN RED CAESAR  
 BCLR MISS LUMPY X02  
 BCLR MISS SCRUMPY U806

	CE	BW	WW	YW	ADG	MCE	Milk	MWW	Stay	Doc	YG	Marb	REA	API	TI
EPDs:	5.4	5.2	77.9	119.1	0.26	4.7	24.4	63.3	15.4	13	-0.44	-0.03	0.85	109	68.7
Rank:	95	99	15	15	15	65	25	10	80	20	65	70	45	90	55

F855 goes back to our S611 donor who produced our Shamwow bull. There is a laundry list of great cows in her pedigree.



## 106 BCLR MISS RED EYE F861

ASA#: 3480750 Breed: PB SM DOB: 3/15/18  
 Homozygous Polled

	IND	Ratio
Doc.	1	
BW	96	86
205	691	103
YW	1147	105

DCR MR MOON SHINE X102  
 TNT RED EYE A212  
 TNT MISS Y32

NPS COW TOWN Y40  
 BCLR MISS COWTOWN B451  
 BCLR MISS WILMA W911

	CE	BW	WW	YW	ADG	MCE	Milk	MWW	Stay	Doc	YG	Marb	REA	API	TI
EPDs:	7.3	4.2	73.5	112.7	0.25	4.1	20.7	57.3	14.8	15.1	-0.38	0.05	0.8	114.3	69
Rank:	85	95	30	25	20	75	60	40	85	5	90	45	60	80	50

I really like the big bodied dam of F861. She is easy keeping and has a nice udder. A maternal sister is a standout in our bred keep pen!







**LOT 107**



**LOT 108**

**107 BCLR MISS DRIVEN F837**

ASA#: 3480727 Breed: 3/8 SM 5/8 AR DOB: 3/3/18

	IND	Ratio
Doc.	1	
BW	81	107
205	660	98
YW	1133	104

**BIEBER HARD DRIVE Y120**  
**BIEBER DRIVEN B105**  
**BIEBER DURHEIM 293Z**

**LBR CROCKETT R81**  
**BCLR MISS WILMA W911**  
**KS MISS COMBINATION S980**

	CE	BW	WW	YW	ADG	MCE	Milk	MWW	Stay	Doc	YG	Marb	REA	API	TI
EPDs:	12.2	-0.4	72.7	114.6	0.26	6.2	23.6	59.9	15.9	16.5	-0.12	0.31	0.55	126	73.5
Rank:	45	30	20	20	20	55	35	20	45	3	85	45	70	50	35

The Driven females are hard to beat! They have all calved so easy with tremendous udders and mothering ability. This is a favorite heifer of mine in the offering, she is hard to fault.

**108 BCLR MISS CINCH F807**

ASA#: 3992518 Breed: PB 1A AR DOB: 2/19/18

	IND	Ratio
Doc.	1	
BW	73	ET
205	617	ET
YW	947	ET

**LSF SAGA 1040Y**  
**PIE CINCH 4126**  
**TKP BONNE BEL 110**  
**BHR GOLDEN BOY 854**  
**BCLR MISS GB 854 A337**  
**MISS BHR LOGAN 212**

	CE	BW	WW	YW	ADG	MCE	Milk	MWW	Stay	YG	Marb	REA	API	TI	
EPDs:	11	-1.2	57	91	0.21	26	7	*	21	*	0.16	0.19	-0.06	205	47
Rank:	72	54	50	50	50	23	40	*	4	*	81	93	54	9	77

Here is an ET heifer out of our A337 donor. Her pedigree is full of great cows, such as our Fay donor and the BHR 212 donor sired by the dependable cowmaker, Logan. Potential is endless! Category 1A

**Sale Day Phones:**

**Doug Bichler** ..... (701) 226-4068  
**Maria Bichler**..... (701) 340-9749  
**Paul Bichler** ..... (701) 226-5861  
**Patrick Schumacher** ..... (701) 321-3275







## 109 BCLR MISS WIDE LOAD F829

ASA#: 3480719 Breed: PB SM DOB: 2/27/18  
Homozygous Polled Heterozygous Black

	IND	Ratio
Doc.	1	
BW	93	90
205	733	109
YW	1078	99

CCR WIDE RANGE 9005A  
BCLR WIDE LOAD C21-3  
WS MOTHER LODE W21

TNT AXIS X307  
BCLR MISS AXIS B425  
KS MISS TODD Y708

	CE	BW	WW	YW	ADG	MCE	Milk	MWW	Stay	Doc	YG	Marb	REA	API	TI
EPDs:	7	4.1	86.7	128.7	0.26	4.9	22	65.3	16.6	13.5	-0.49	0.04	1.12	122	77
Rank:	90	95	2	3	15	60	50	10	65	15	40	45	5	60	15

This is a very long bodied Wide Load out of a good Axis cow. Her dam has been a consistent producer of performance cattle and we think the maternals of the Wide Loads will be excellent.



BCLR Wide Load C21-3

## 110 BCLR MISS WIDE LOAD F850

ASA#: 3480740 Breed: PB SM DOB: 3/12/18  
Homozygous Polled Heterozygous Black

	IND	Ratio
Doc.	2	
BW	85	100
205	678	101
YW	1037	95

CCR WIDE RANGE 9005A  
BCLR WIDE LOAD C21-3  
WS MOTHER LODE W21

MR NLC SUPERIOR S6018  
BCLR MISS SPICE X028  
TNT MISS HONEY L9

	CE	BW	WW	YW	ADG	MCE	Milk	MWW	Stay	Doc	YG	Marb	REA	API	TI
EPDs:	9.5	2	70.9	105.1	0.21	5.4	24.2	59.6	20	15.6	-0.52	-0.11	1.09	121.8	67.3
Rank:	60	60	40	40	50	50	30	25	15	4	20	90	10	60	65

Another descendant of the L9 cow family. Her dam was the first natural calf we had out of the L9 donor and she's still going strong!



## 111 BCLR MISS WIDE LOAD F862

ASA#: 3480751 Breed: PB SM DOB: 3/15/18  
Homozygous Polled Heterozygous Black

	IND	Ratio
Doc.	1	
BW	87	98
205	649	97
YW	1108	102

CCR WIDE RANGE 9005A  
BCLR WIDE LOAD C21-3  
WS MOTHER LODE W21

SS EBONYS GRANDMASTER  
BCLR MISS TRAY X024  
BCLR LACY M7

	CE	BW	WW	YW	ADG	MCE	Milk	MWW	Stay	Doc	YG	Marb	REA	API	TI
EPDs:	8.3	1.9	68.7	102.7	0.21	4.8	22.2	56.5	17.7	13.4	-0.44	0.01	1	121.5	68.5
Rank:	75	55	50	45	50	60	45	45	50	15	65	55	15	60	55

This heifer has maternal written all over her. She is soft patterned and attractive like all the Home Run daughters are and will make a nice cow.





# 112 BCLR MISS CASH FLOW F831

ASA#: 3480721 Breed: PB SM DOB: 2/28/18  
Homozygous Polled Homozygous Black

	IND	Ratio
Doc.	2	
BW	99	83
205	746	111
YW	1090	100

CCR WIDE RANGE 9005A  
BCLR CASH FLOW C820  
BCLR MISS MONICA U820

W/C UNITED 956Y  
BCLR MISS UNITED B423  
BCLR MISS JOKER

	CE	BW	WW	YW	ADG	MCE	Milk	MWW	Stay	Doc	YG	Marb	REA	API	TI
EPDs:	8.8	3	89	137.8	0.31	3.6	18.4	62.9	17.7	12.1	-0.4	0.05	1.01	130.8	80.1
Rank:	70	85	2	1	2	80	85	15	50	30	85	45	15	30	10

What an eye catcher! This heifer is why Cash Flow is quickly gaining popularity among all who use him. She is soft, broody, and attractive. Imagine how impressive she'll be as a bred!



# 113 BCLR MISS CASH FLOW F825

ASA#: 3480715 Breed: 3/4 SM 1/4 AN DOB: 2/27/18  
Homozygous Polled Homozygous Black

	IND	Ratio
Doc.	1	
BW	75	113
205	592	88
YW	1048	96

CCR WIDE RANGE 9005A  
BCLR CASH FLOW C820  
BCLR MISS MONICA U820

S A V 8180 TRAVELER 004  
KS MISS 004 X296  
KS MORGAN M9

	CE	BW	WW	YW	ADG	MCE	Milk	MWW	Stay	Doc	YG	Marb	REA	API	TI
EPDs:	13.8	-1.1	64.2	97.8	0.21	7.4	21.1	53.1	20.2	11.8	-0.35	0.1	0.92	130.8	67.3
Rank:	25	20	55	55	55	35	60	60	5	45	20	85	10	35	60

This heifer goes back to the KS Kayla cow family which is always a good thing. I think she has some show potential for her new owner.



# 114 BCLR MISS MAINLINE F808

ASA#: 3480697 Breed: 3/4 SM 1/4 AN DOB: 2/20/18  
Homozygous Polled Homozygous Black

	IND	Ratio
Doc.	1	
BW	86	ET
205	785	ET
YW	1171	ET

TJ MAIN EVENT 503B  
CDI MAINLINE 265D  
HOOK'S BEYONCE 82B

KS CAPTN JACK T518  
KS HANNAH Y337  
KS BECKY N185

	CE	BW	WW	YW	ADG	MCE	Milk	MWW	Stay	Doc	YG	Marb	REA	API	TI
EPDs:	10.7	2	84.3	123.6	0.25	5.8	26	68.1	20.8	14.7	-0.42	0.32	1.17	142.1	81.3
Rank:	65	85	3	10	25	65	20	3	3	10	10	45	1	15	10

What a truck! That's not usually a phrase I use on heifers, but it's sure accurate. I love the donor dam of this heifer and I only offered her because I have a flushmate left in my replacement pen!

# 115 BCLR MISS HOME RUN F836

ASA#: 3480726 Breed: 3/4 SM 1/4 AN DOB: 3/2/18  
Homozygous Polled Homozygous Black

	IND	Ratio
Doc.	1	
BW	69	113
205	710	106
YW	1037	95

ELLINGSON IDENTITY 9104  
KS HOME RUN B23  
KS ZOEY Z661

W/C EXECUTIVE ORDER 8543B  
BCLR MISS EXECUTIVE D625  
CDI MS CROCKET 88T

	CE	BW	WW	YW	ADG	MCE	Milk	MWW	Stay	Doc	YG	Marb	REA	API	TI
EPDs:	18.9	-3.1	69.4	110.4	0.26	10.4	27.8	62.5	17.8	14.5	-0.33	0.22	0.95	145.7	77.3
Rank:	2	4	35	25	20	4	10	15	25	15	25	65	5	10	20

If Home Run isn't enough on the top side, how about adding in her granddam, 88T? Great pedigree from any angle.







# 116 BCLR MISS HOME RUN F832

ASA#: 3480722 Breed: 5/8 SM 1/4 AN 1/8 AR DOB: 3/1/18  
Homozygous Polled Homozygous Black

	IND	Ratio
Doc.	1	
BW	83	97
205	681	101
YW	1056	97

ELLINGSON IDENTITY 9104

KS HOME RUN B23

KS ZOEY Z661

CDI VEGAS 26X

BCLR MISS VEGAS D629

BCLR MISS SATURN

	CE	BW	WW	YW	ADG	MCE	Milk	MWW	Stay	Doc	YG	Marb	REA	API	TI
EPDs:	14.9	-0.4	68.3	107.4	0.24	10	27.6	61.7	17.9	13.2	-0.23	0.15	0.66	130.7	70.6
Rank:	20	30	40	30	35	10	10	15	25	25	55	80	45	35	45

F832 is out of another good Vegas cow. The Vegas's continue to step up their game in our cowherd and its becoming the norm to see them in the pedigrees of the good ones.

# 117 BCLR MISS DRIVEN F839

ASA#: 3480729 Breed: 3/8 SM 1/2 AR 1/8 AN DOB: 3/4/18  
Heterozygous Black

	IND	Ratio
Doc.	1	
BW	72	111
205	699	104
YW	1071	98

BIEBER HARD DRIVE Y120

BIEBER DRIVEN B105

BIEBER DURHEIM 293Z

KS HOME RUN B23

BCLR MISS HOME RUN D607

BCLR MISS VEGAS B462

	CE	BW	WW	YW	ADG	MCE	Milk	MWW	Stay	Doc	YG	Marb	REA	API	TI
EPDs:	19.4	-2.8	69.9	110.1	0.25	10.8	27.7	62.6	17.1	16.3	-0.18	0.37	0.66	144.9	77.9
Rank:	2	5	30	25	25	3	10	10	35	4	70	35	45	15	15

I'm really not sure why I put this heifer in the sale. She combines two maternal giants and is sure to be a tremendous cow. Her dam is on my short list of potential donors!

# 118 BCLR MISS CAPITALIST F838

ASA#: 3480728 Breed: 1/2 SM 1/2 AN DOB: 3/3/18  
Homozygous Black

	IND	Ratio
Doc.	2	
BW	83	97
205	667	99
YW	1100	101

S A V FINAL ANSWER 0035

CONNELLY CAPITALIST 028

PRIDES PITA OF CONANGA 8821

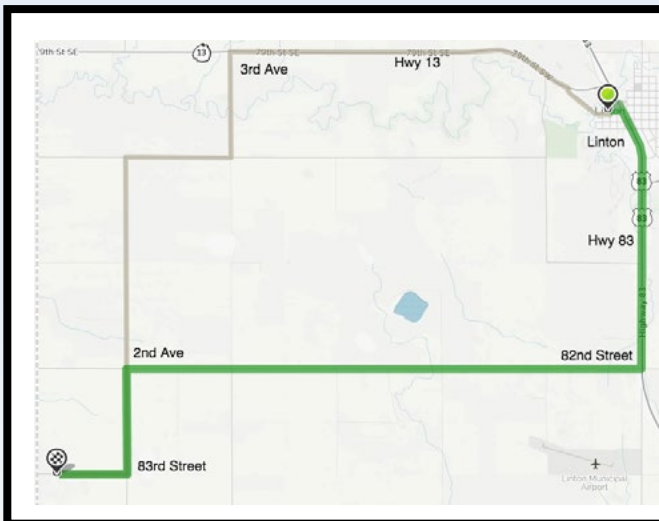
BCLR UPPER CUT B212

KS MS UPPERCUT D204

KS BOBBIE B987

	CE	BW	WW	YW	ADG	MCE	Milk	MWW	Stay	Doc	YG	Marb	REA	API	TI
EPDs:	15	1	76.3	116.5	0.25	7.5	22	60.1	18	9.6	-0.1	0.38	0.55	143.2	78.2
Rank:	15	65	15	15	25	30	50	20	25	75	90	35	70	15	15

F838's dam was our pick of the Kenner Simmentals bred heifers last year. She is very attractive patterned and already resembles her clean fronted, level designed mother.



# BICHLER

SIMMENTALS & RED ANGUS

130 83rd Street SE  
Linton, N.D. 58552

**Preferred route:** Travel south of Linton, N.D., on Hwy 83 and turn west at 82nd Street. Travel for five miles and turn south at 2nd Ave. Travel for one mile and turn west at the Bichler Simmentals sign. Travel for three-quarter of a mile; the sale will be held in the red and white barn.

**Secondary route:** Travel west of Linton, N.D., on Hwy 13 and turn south at 3rd Ave. Travel for one mile and turn west at 80th Street. Travel for one mile and turn south at 2nd Ave. Travel for three miles and turn west at the Bichler Simmentals sign. Travel for three-quarter of a mile; the sale will be held in the red and white barn.





# BICHLER

SIMMENTALS & RED ANGUS

130 83<sup>rd</sup> Street SE  
Linton, N.D. 58552

**Time Sensitive  
Please Deliver Immediately**

**Return Service Requested**



[WWW.BICHLERSIMMENTALS.COM](http://WWW.BICHLERSIMMENTALS.COM)

 /BICHLERSIMMENTALS